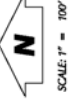




NOTE: Locations of facilities are only approximate.

158,000



PLOTTED BY: Herman M. Garcia
 LS #004
 LS NAME: Lubbock
 LS ADDRESS: 237 E. Lubbock
 LS ZIP: 78204

SAN ANTONIO WATER SYSTEM
 INFRASTRUCTURE PLANNING DEPARTMENT
 GIS MAPPING DIVISION

27 - JULY - 2006

158 - 568



S.A.W.S. LIMITED MAP DISCLAIMER
This utility map is for reference only. The information may not represent the actual conditions of the system. The information is provided as a representation of the accuracy of the information on this map. S.A.W.S. assumes no liability for any errors, omissions, or inaccuracies in the map. S.A.W.S. prohibits the reproduction or sale of this document. This S.A.W.S. utility map may not be used under any circumstances, be copied, reproduced, or distributed without the written permission of the San Antonio Water System (S.A.W.S.).

PLOTTED BY: Ernest J. Zavala
LS #0535
LS NAME: Valle Vista
LS ADDRESS: 4011 Valle Vista
LS ZIP: 78223

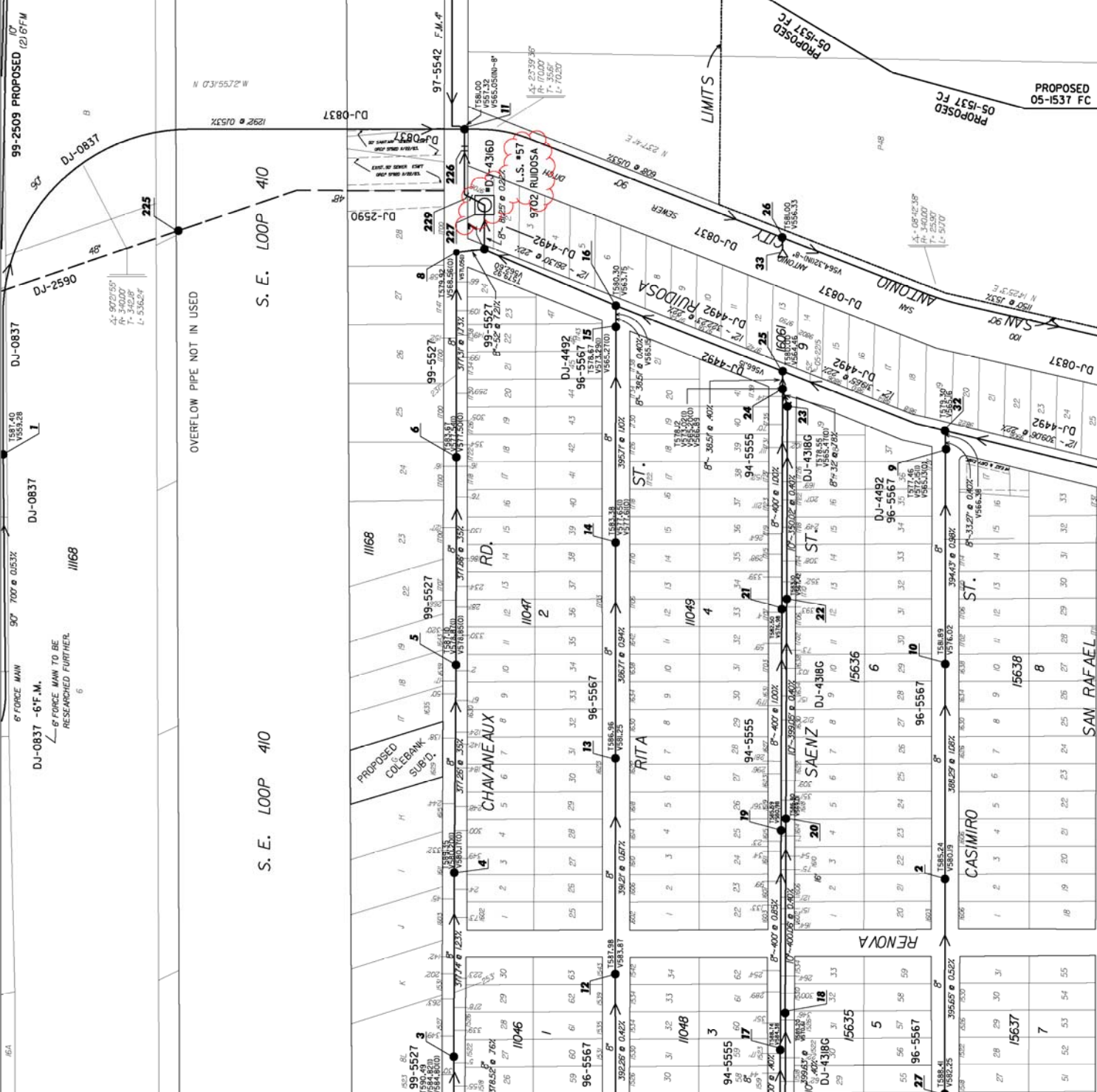
SCALE: 1" = 100'

556,000

184,000

NOTE: Locations of facilities are only approximate.





NOTE: Locations of facilities are only approximate.

168,000

540,000

SCALE: 1" = 100'

PLOTTED BY: Herman M. Garcia

LS #057
 LS NAME: Chavaneaux East
 LS ADDRESS: 9702 Ruidosa St.
 LS ZIP: 78214

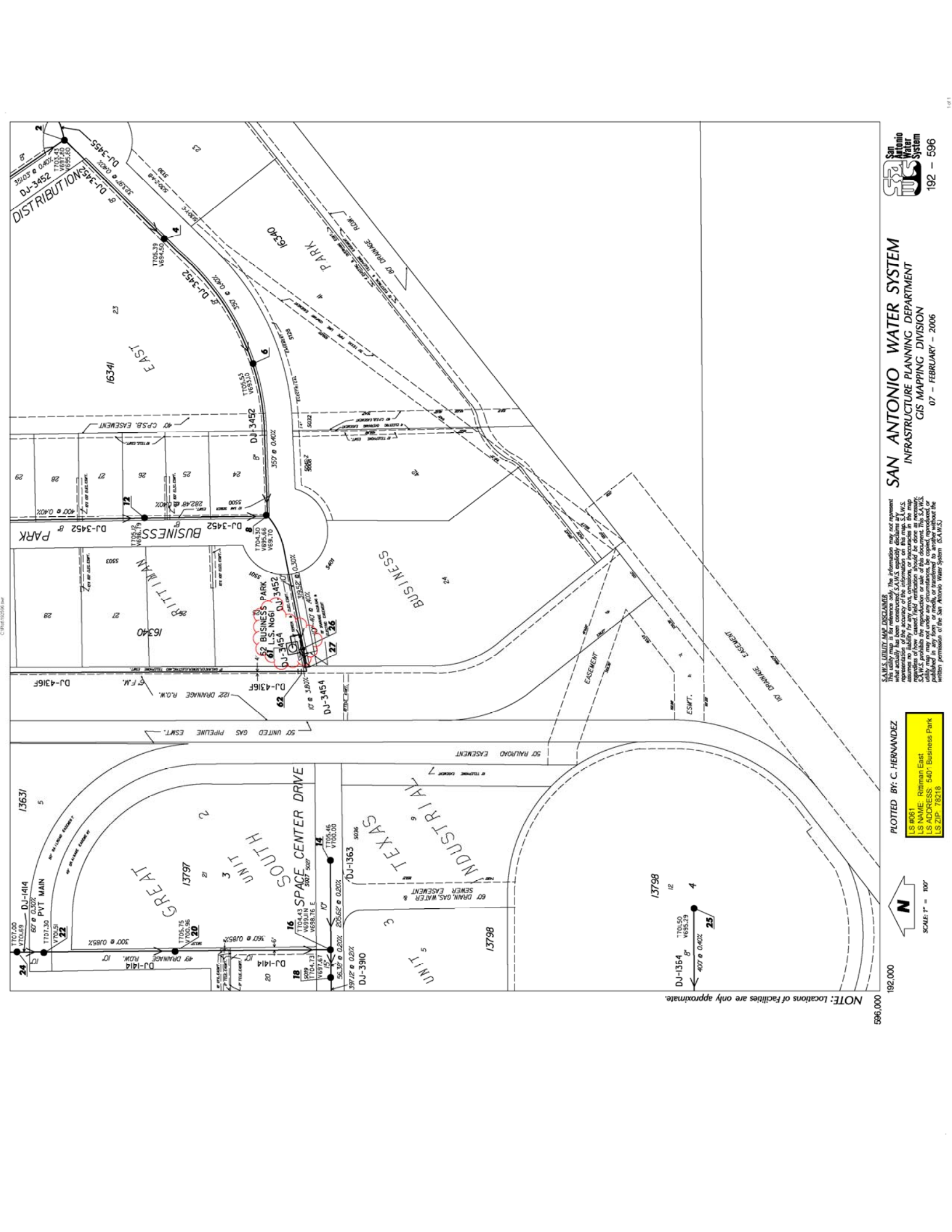
29 - JUNE - 2007

168 - 540

SAN ANTONIO WATER SYSTEM
 INFRASTRUCTURE PLANNING DEPARTMENT
 GIS MAPPING DIVISION

SAN ANTONIO WATER SYSTEM
 INFRASTRUCTURE PLANNING DEPARTMENT
 GIS MAPPING DIVISION

168 - 540



SAN ANTONIO WATER SYSTEM
 INFRASTRUCTURE PLANNING DEPARTMENT
 GIS MAPPING DIVISION
 07 - FEBRUARY - 2006

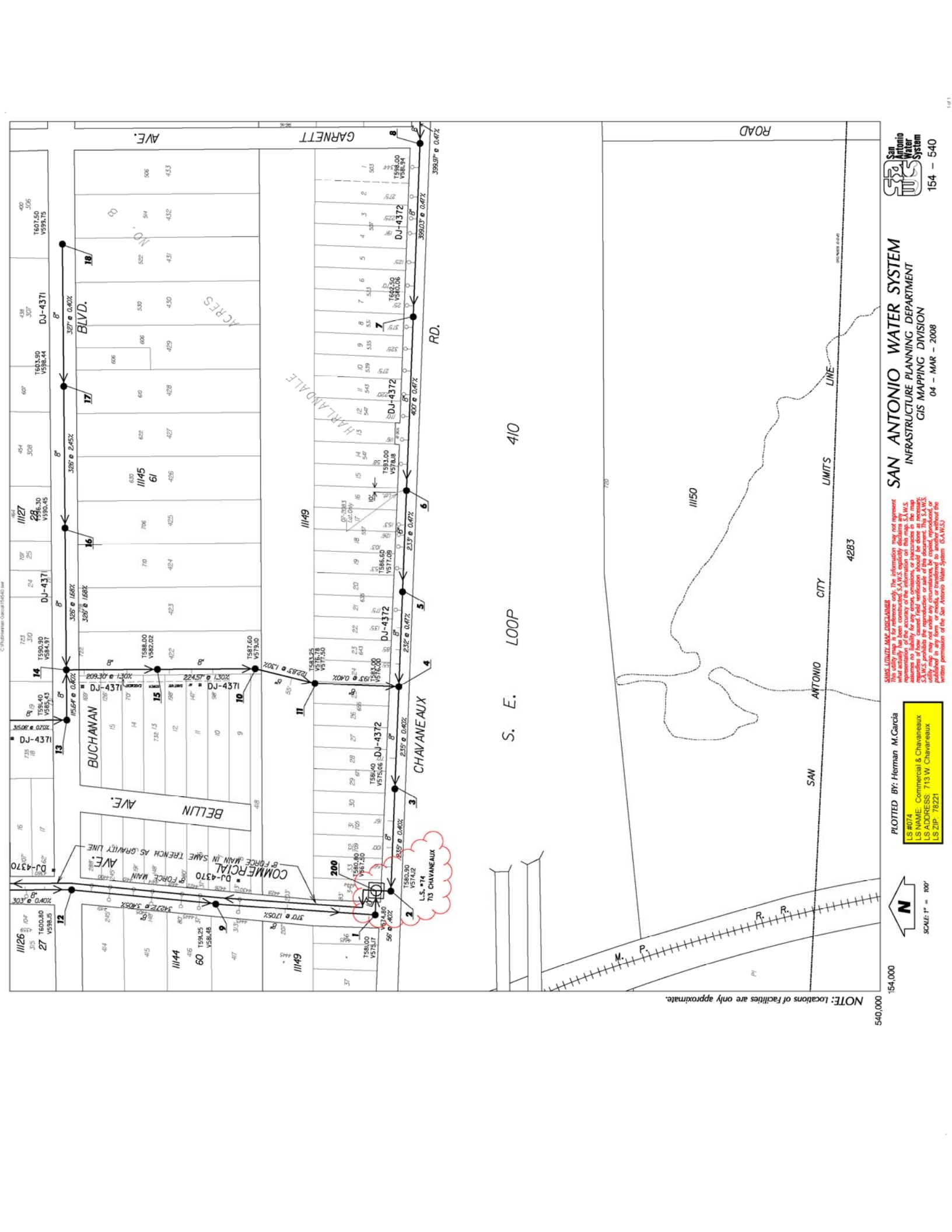
S.A.W.S. Utility Map Disclaimer
 This utility map is for reference only. The information may not represent the actual location of the facilities shown. The information on this map is the best representation of the accuracy of the information on this map. S.A.W.S. assumes no liability for any errors, omissions, or inaccuracies in the map. S.A.W.S. prohibits the reproduction or sale of this document. This S.A.W.S. utility map may not be used for any other purpose without the written permission of the San Antonio Water System (S.A.W.S.).

PLOTTED BY: C. HERNANDEZ
 LS #051
 LS NAME: Rittiman East
 LS ADDRESS: 5401 Business Park
 LS ZIP: 78218



NOTE: Locations of facilities are only approximate.

596.000 192.000



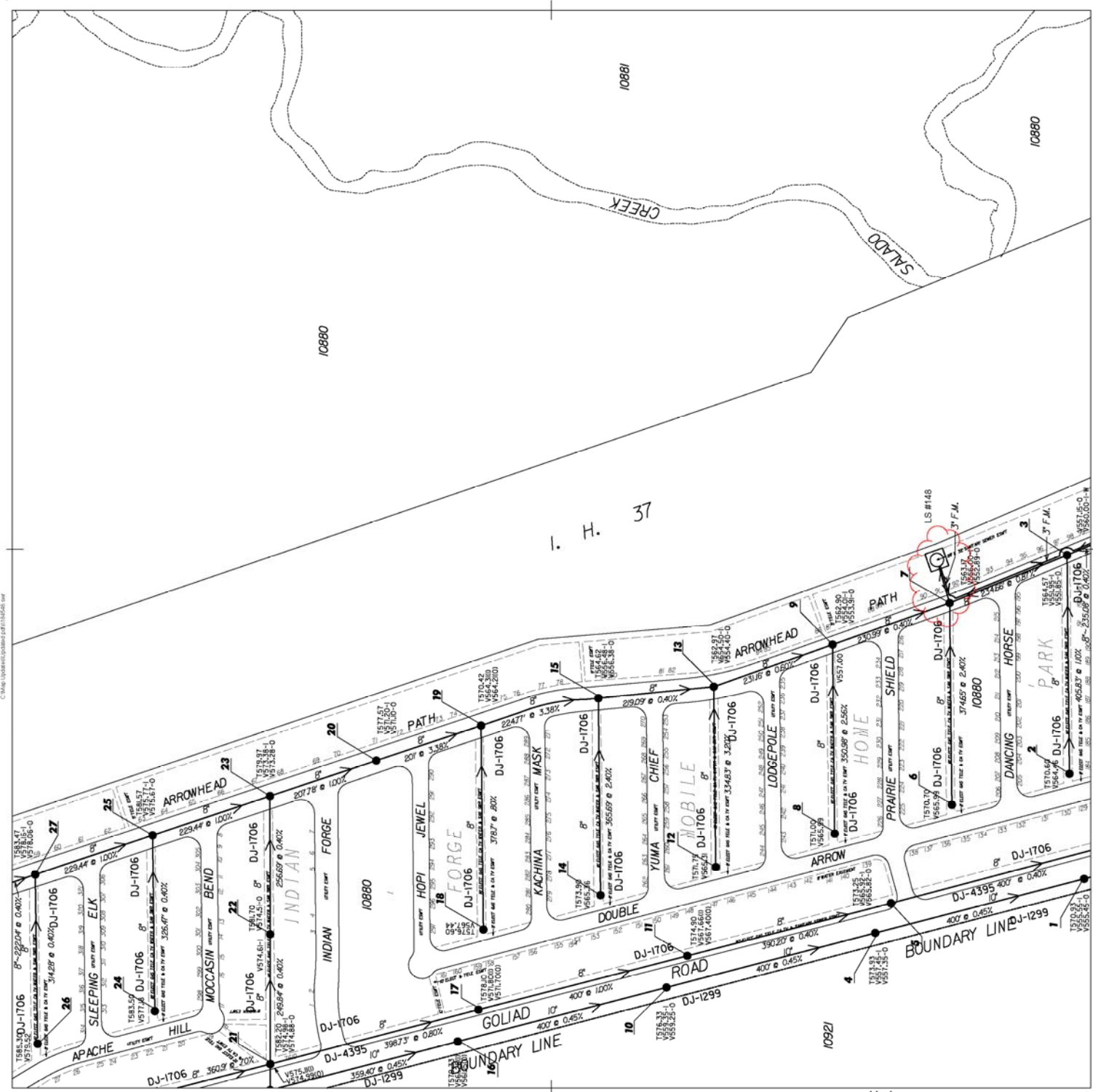
STATE UTILITY MAP DISCLAIMER
 This utility map is for reference only. The information may not represent what actually has been constructed. S.A.W.S. expressly disclaims any liability for any error, omission, or inaccuracies in the map. Customers of how named field verification should be done as necessary. Utility may not under any circumstances be copied, reproduced, or published in any form or media, or transmitted to another without the written permission of the San Antonio Water System. (04-11-03)

PLOTTED BY: Herman M. Garcia
LS #074
LS NAME: Commercial & Chavaneaux
LS ADDRESS: 713 W. Chavaneaux
LS ZIP: 78221



540,000

NOTE: Locations of facilities are only approximate.



JOB NO.	DESCRIPTION	LD. DATE	FILE
DJ-1299	Graded - SE Utility to 1000' HD	06-28-93	SP793
DJ-1706	10" (7.5' to 11.5' & 11.5' to 11.5')	11-28-93	SP793
DJ-4395	USA #66 - Brookside (Abandon)		KXXXXX SP79

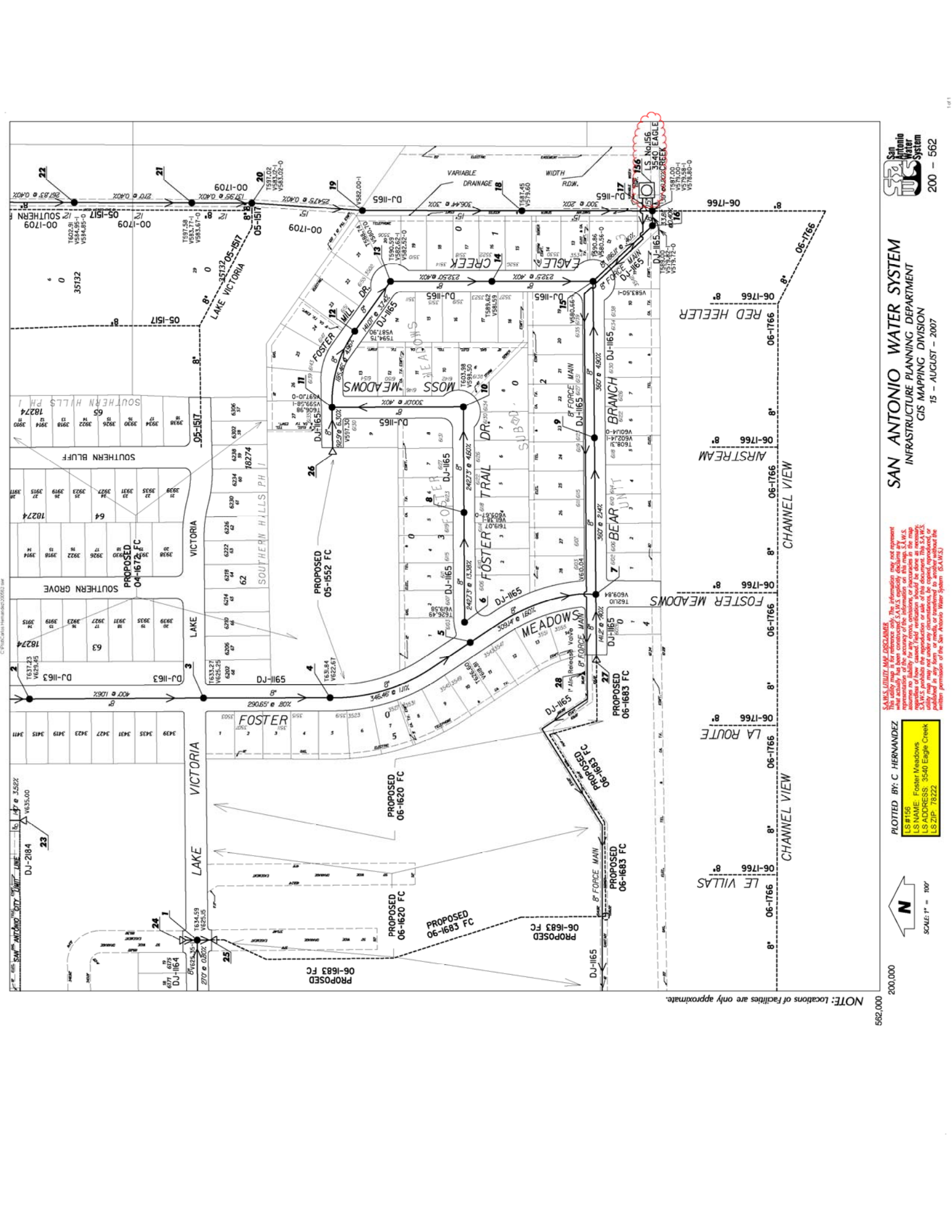
NOTE: Locations of facilities are only approximate.

184,000
546,000



DIGITIZED BY: Herman M. Garcia
 PRINTED BY: Herman M. Garcia
 LS #148
 LS NAME: Indian Hills
 LS ADDRESS: 3500 Goliad Road
 LS ZIP: 78223





200 - 562

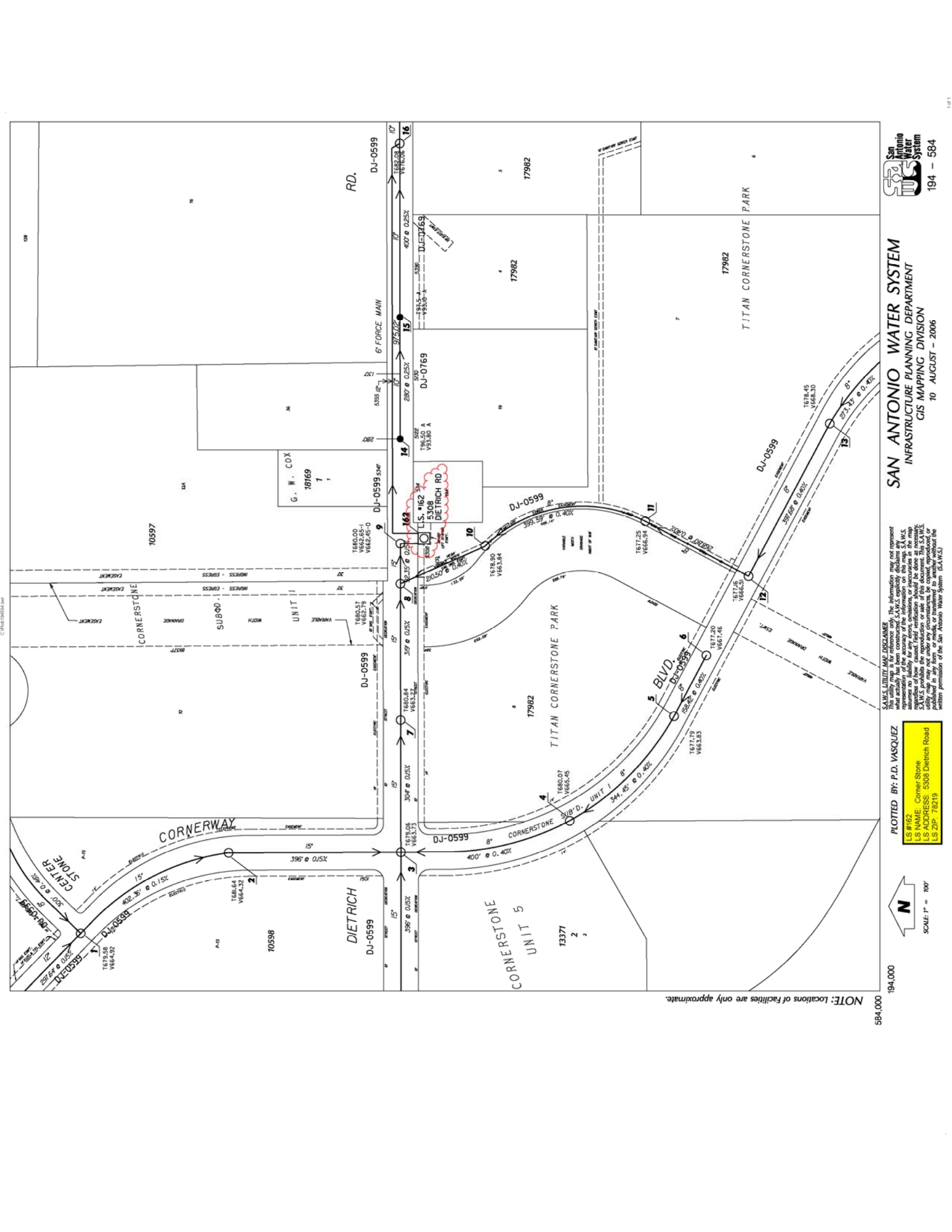
15 - AUGUST - 2007

SAN ANTONIO WATER SYSTEM
 INFRASTRUCTURE PLANNING DEPARTMENT
 GIS MAPPING DIVISION

PLOTTED BY: C. HERNANDEZ

LS #155
 LS NAME: Foster Meadows
 LS ADDRESS: 3540 Eagle Creek
 LS ZIP: 78222

SANMUNICIPAL MAP DISCLAIMER
 This utility map is for reference only. The information may not represent what actually has been constructed. SANMUNICIPAL does not warrant, assume no liability for any errors, omissions, or inaccuracies in the map. SANMUNICIPAL reserves the right to modify or update this map at any time without notice. This disclaimer applies to all copies, reproductions, or uses of this map. SANMUNICIPAL is not responsible for any damages, including consequential damages, arising from the use of this map. SANMUNICIPAL is not responsible for any damages, including consequential damages, arising from the use of this map.



SAN ANTONIO WATER SYSTEM
INFRASTRUCTURE PLANNING DEPARTMENT
GIS MAPPING DIVISION

10 AUGUST - 2006

PLOTTED BY: P.D. VASQUEZ
LS #162
LS NAME: Corner Stone
LS ADDRESS: 5908 Dietrich Road
LS ZIP: 78219

SCALE: 1" = 100'

NOTE: Locations of facilities are only approximate.

194,000
584,000

© 2006 SAMS



JOB NO.	DESCRIPTION	LD DATE	FILE
1001	1001	1001	1001
1002	1002	1002	1002
1003	1003	1003	1003
1004	1004	1004	1004
1005	1005	1005	1005
1006	1006	1006	1006
1007	1007	1007	1007
1008	1008	1008	1008
1009	1009	1009	1009
1010	1010	1010	1010

NOTE: Locations of facilities are only approximate.

602.000
166.000



US #164
US #165
US #166
US #167
US #168
US #169
US #170
US #171
US #172
US #173
US #174
US #175
US #176
US #177
US #178
US #179
US #180
US #181
US #182
US #183
US #184
US #185
US #186
US #187
US #188
US #189
US #190
US #191
US #192
US #193
US #194
US #195
US #196
US #197
US #198
US #199
US #200

PLOTTED BY: Richard McWhirter

SAN ANTONIO WATER SYSTEM
INFRASTRUCTURE PLANNING DEPARTMENT
GIS MAPPING DIVISION



166 - 602
16 - MAY - 2005

SWMS UTILITY MAP DISCLAIMER
The utility map is for reference only. The information may not represent what actually has been constructed. The information on this map SWMS assumes no liability for any errors, omissions or inaccuracies in the map regardless of how caused. Field verification should be done as necessary.

**SAN ANTONIO WATER SYSTEM
UTILITY MAP DISCLAIMER**
This utility map is for reference only. The information may not represent what actually has been constructed. The information on this map is for informational purposes only. SAN ANTONIO WATER SYSTEM assumes no liability for any errors, omissions, or inaccuracies in the map regardless of how caused. Field verification should be done as necessary.

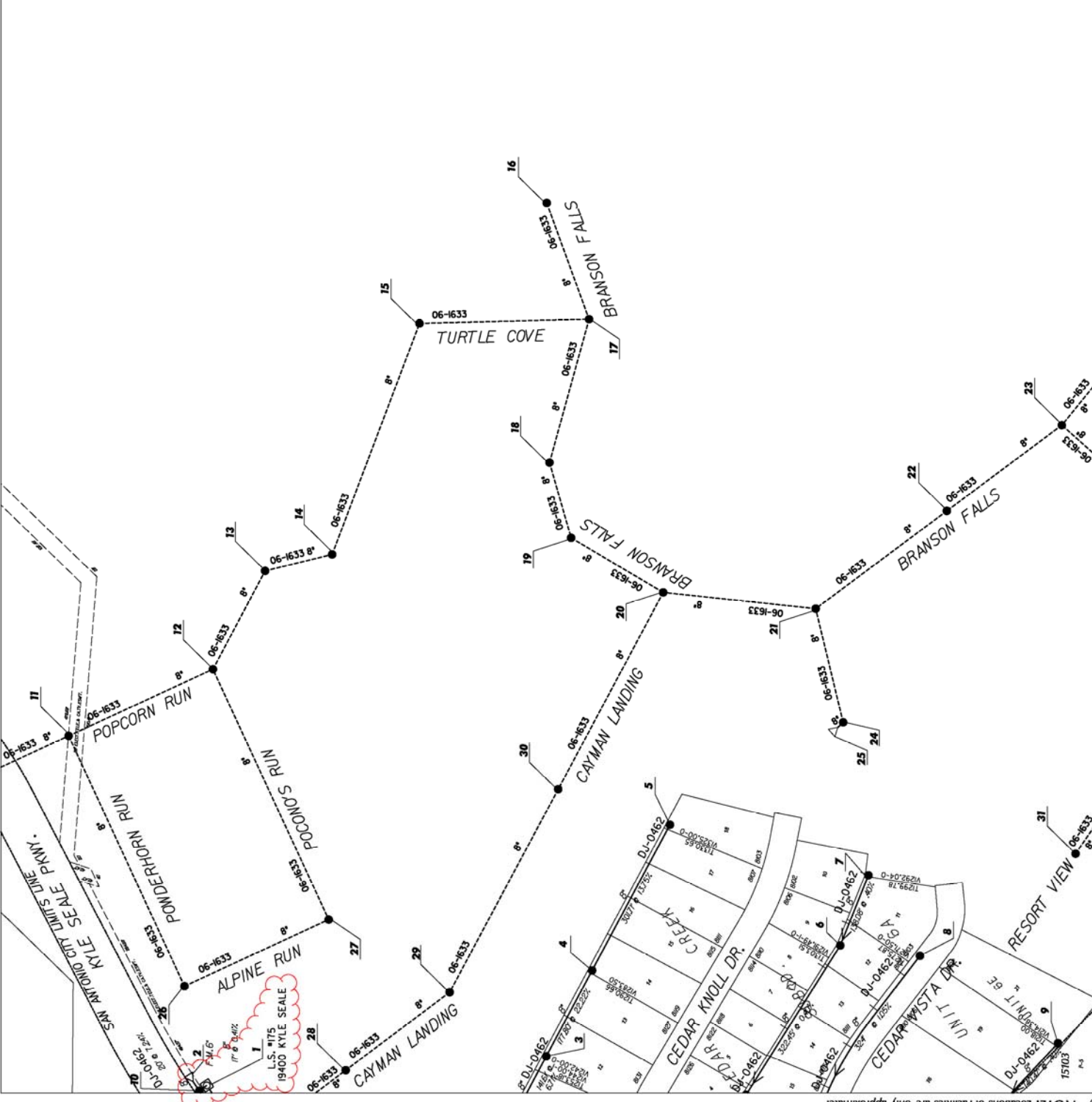
PLOTTED BY: C. HERNANDEZ
LS #185
LS NAME: Encino Park
LS ADDRESS: 3098 Caliza
LS ZIP: 78209

SCALE: 1" = 100'

180,000
654,000

NOTE: Locations of facilities are only approximate.





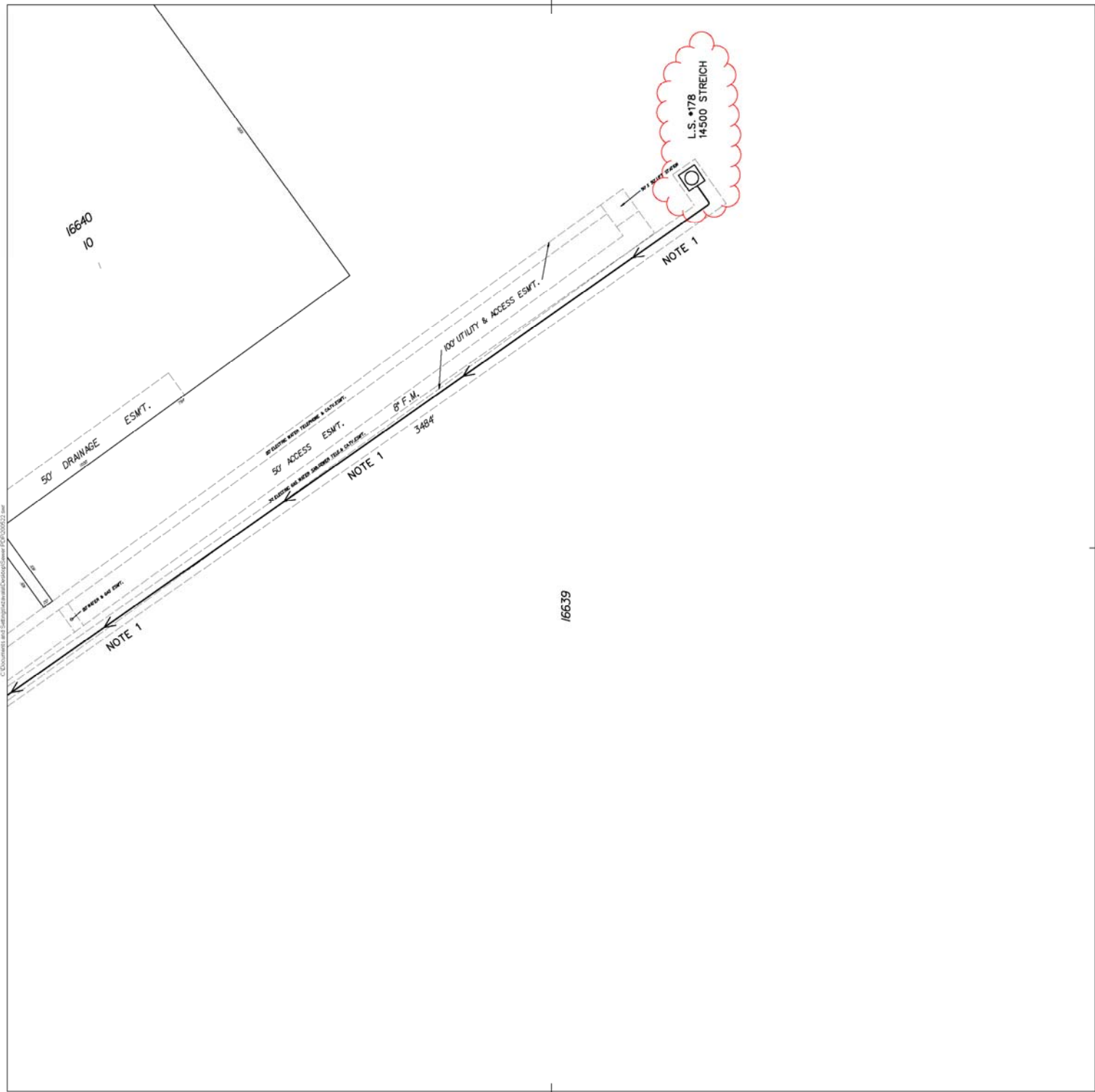
SAN ANTONIO WATER SYSTEM
This utility map is for reference only. The information may not represent the actual conditions of the system. The information on this map is the property of the San Antonio Water System. It is provided for informational purposes only and does not constitute a contract. The San Antonio Water System is not responsible for any errors, omissions, or inaccuracies in the map. The San Antonio Water System reserves the right to modify the map at any time without notice. This S.A.W.S. utility map may not under any circumstances be copied, reproduced, or distributed without the written permission of the San Antonio Water System (S.A.W.S.).

PLOTTED BY: P.D. VASQUEZ
LS #175
LS NAME: Cedar Creek
LS ADDRESS: 19400 Kyle Scale Parkway
LS ZIP: 78255

SCALE: 1" = 100'

112,000
648,000

NOTE: Locations of facilities are only approximate.



JOB NO.	DESCRIPTION	LD. DATE	FILE
NOTE 1	Brandy Lake Industrial Park District, OR 6355 IO-10-91	6355	

NOTE: Locations of facilities are only approximate.

522,000
200,000



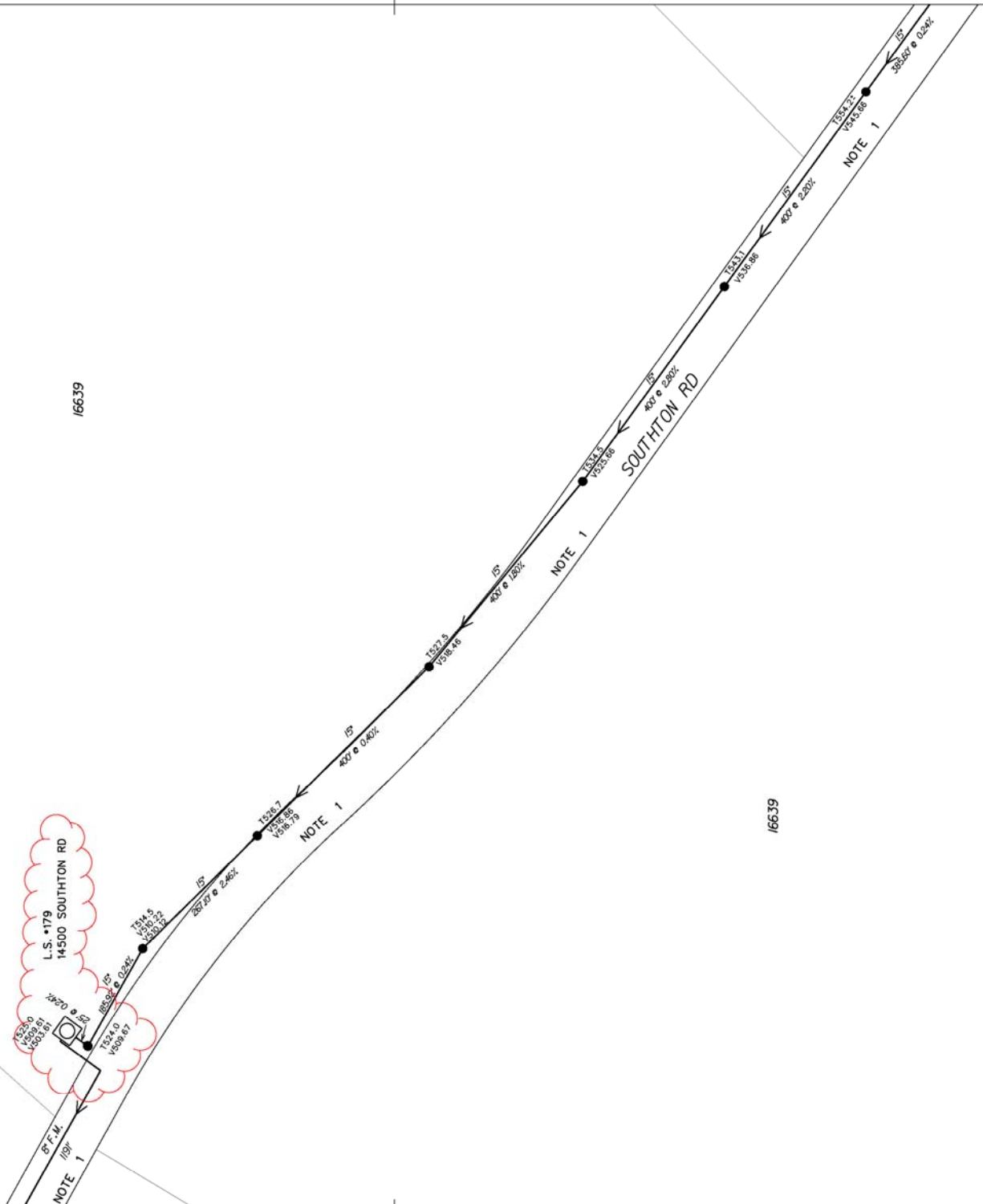
DIGITIZED BY: Herman M. Garcia
REVISED BY: Herman M. Garcia

L.S. #178
L.S. NAME: Golden Aluminum
L.S. ADDRESS: 14500 Streich Road
L.S. ZIP: 78112

SAN ANTONIO WATER SYSTEM
ENGINEERING GROUP
UTILITY MAPPING DIVISION
18-Dec-2002



C:\Documents and Settings\matt\My Documents\Drawings\2002\17-1196-01.dwg



JOB NO.	DESCRIPTION	LD. DATE	FILE
NOTE 1	Brandy Lake Industrial Park District	10-0-91	6.555

NOTE: Locations of facilities are only approximate.

196,000

524,000



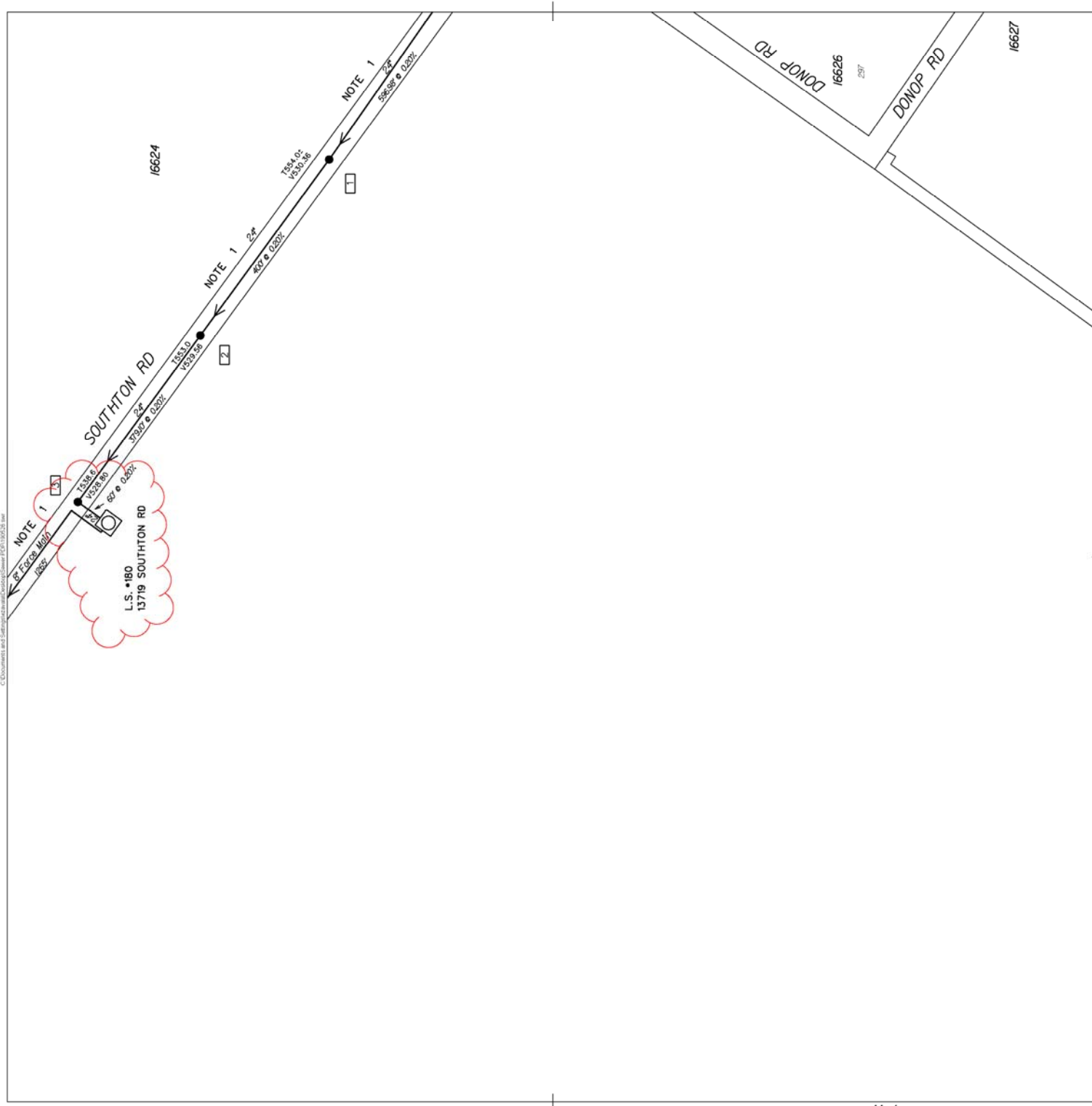
DIGITIZED BY: Herman M. Garcia
REVISED BY:

L.S. #179
L.S. NAME: Shreich Road
L.S. ADDRESS: 14500 Southton Road
L.S. ZIP: 78223

SAN ANTONIO WATER SYSTEM
ENGINEERING GROUP
UTILITY MAPPING DIVISION
17-Dec-2002



C:\Documents and Settings\user\My Documents\17110020.dwg



JOB NO.	DESCRIPTION	LD. DATE	FILE
17110020	Trinity Lake Industrial Park District, OW-6355 IO-10-91		SP80

190,000
526,000



DIGITIZED BY: Herman M. Garcia
REVISED BY: Herman M. Garcia

L.S. #180
 L.S. #180: Southton Road
 L.S. ADDRESS: 13719 Southton Road
 L.S. ZIP: 78223

SAN ANTONIO WATER SYSTEM
 ENGINEERING GROUP
 UTILITY MAPPING DIVISION
 17-Dec-2002





NOTE: Locations of facilities are only approximate.

594,000

162,000



PLOTTED BY: P.D. VASQUEZ
 LS #192
 LS NAME: Mission Del Lago
 LS ADDRESS: 10762 Pheasanton Road
 LS ZIP: 78221

SAN ANTONIO WATER SYSTEM
 INFRASTRUCTURE PLANNING DEPARTMENT
 GIS MAPPING DIVISION
 30 MAY - 2007



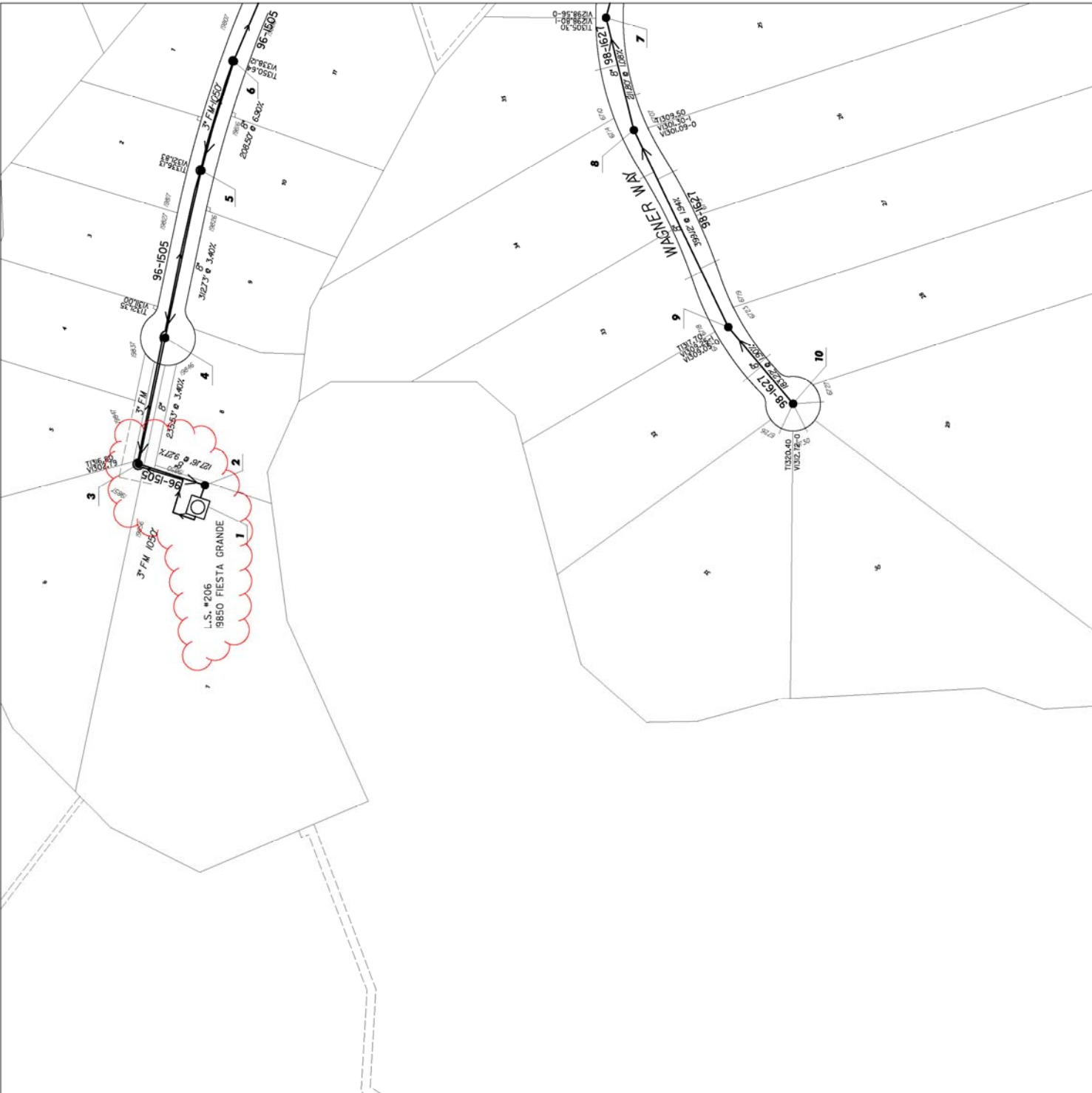
SAN ANTONIO WATER SYSTEM
 INFRASTRUCTURE PLANNING DEPARTMENT
 GIS MAPPING DIVISION
 30 MAY - 2007

SAN ANTONIO WATER SYSTEM
 INFRASTRUCTURE PLANNING DEPARTMENT
 GIS MAPPING DIVISION
 30 MAY - 2007

SAN ANTONIO WATER SYSTEM
 INFRASTRUCTURE PLANNING DEPARTMENT
 GIS MAPPING DIVISION
 30 MAY - 2007

SAN ANTONIO WATER SYSTEM
 INFRASTRUCTURE PLANNING DEPARTMENT
 GIS MAPPING DIVISION
 30 MAY - 2007

SAN ANTONIO WATER SYSTEM
 INFRASTRUCTURE PLANNING DEPARTMENT
 GIS MAPPING DIVISION
 30 MAY - 2007



NOTE: Locations of facilities are only approximate.

118,000
648,000



PLOTTED BY: Richard McWhirter
 L.S.#206
 L.S. NAME: L.S. Shirts
 L.S. ADDRESS: 9850 Fiesta Grande
 L.S. ZIP: 78258

SWS UTILITY MAP DISCLAIMER
 The utility map is for reference only. The information may not represent what actually has been constructed. SWS does not warrant the accuracy or completeness of the information on this map. SWS assumes no liability for any errors, omissions, or inaccuracies in the map regardless of how caused. Field verification should be done as necessary.



SAN ANTONIO WATER SYSTEM
INFRASTRUCTURE PLANNING DEPARTMENT
GIS MAPPING DIVISION

22 - SEPT - 2006

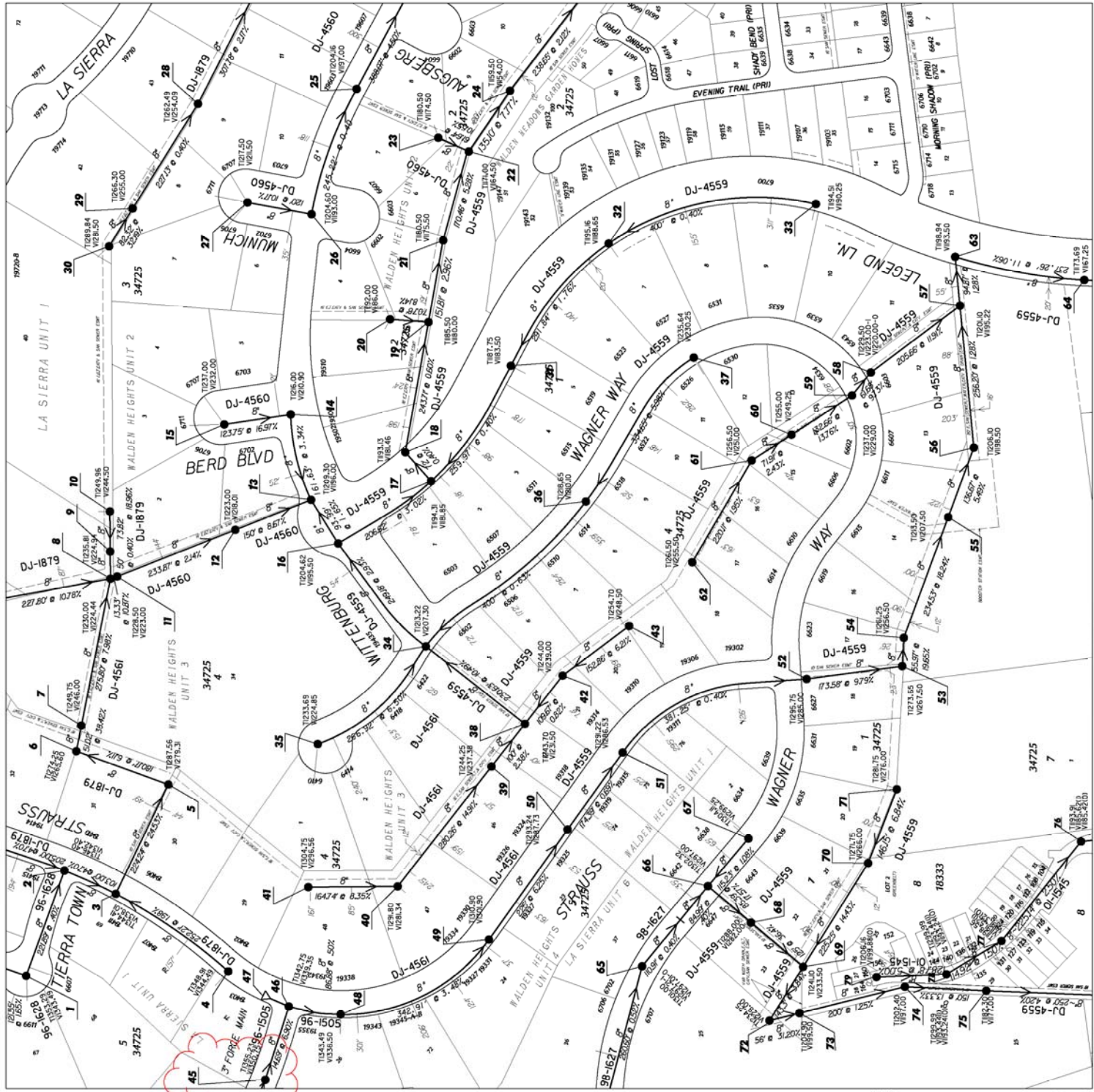
S.A.W.S. LIMITED MAP DISCLAIMERS
This utility map is for reference only. The information may not represent the actual conditions of the system. S.A.W.S. assumes no liability for any errors, omissions, or inaccuracies in this map. S.A.W.S. prohibits the reproduction or use of this document. This S.A.W.S. utility map may not be used under any circumstances, be copied, reproduced, or distributed without the written permission of the San Antonio Water System (S.A.W.S.).

PLOTTED BY: Ernest J. Zavala
LS #206
LS NAME: La Sierra
LS ADDRESS: 19850 Fiesta Grande
LS ZIP: 78256
NOTE: Rehabilitate MH #45



120.000
648.000

NOTE: Locations of facilities are only approximate.



45



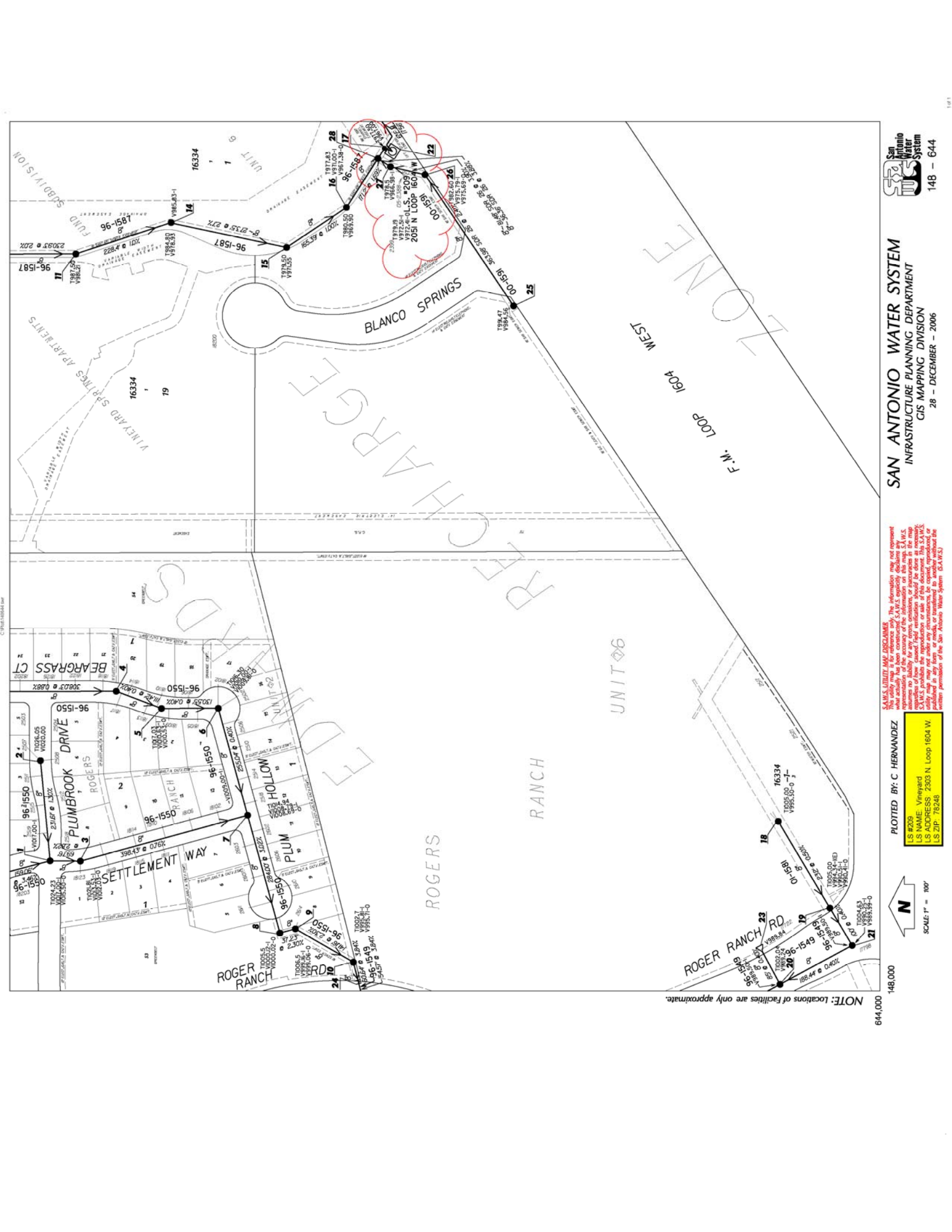
SAN ANTONIO WATER SYSTEM
 INFRASTRUCTURE PLANNING DEPARTMENT
 GIS MAPPING DIVISION

3 - FEBRUARY - 2006

PLOTTED BY: Herman M. Garcia
 LS #208
 LS NAME: Brighton Oaks
 LS ADDRESS: 2543 Brighton Oaks
 LS ZIP: 78231

SCALE: 1" = 100'

NOTE: Locations of facilities are only approximate.



SAN ANTONIO WATER SYSTEM
INFRASTRUCTURE PLANNING DEPARTMENT
GIS MAPPING DIVISION
28 - DECEMBER - 2006

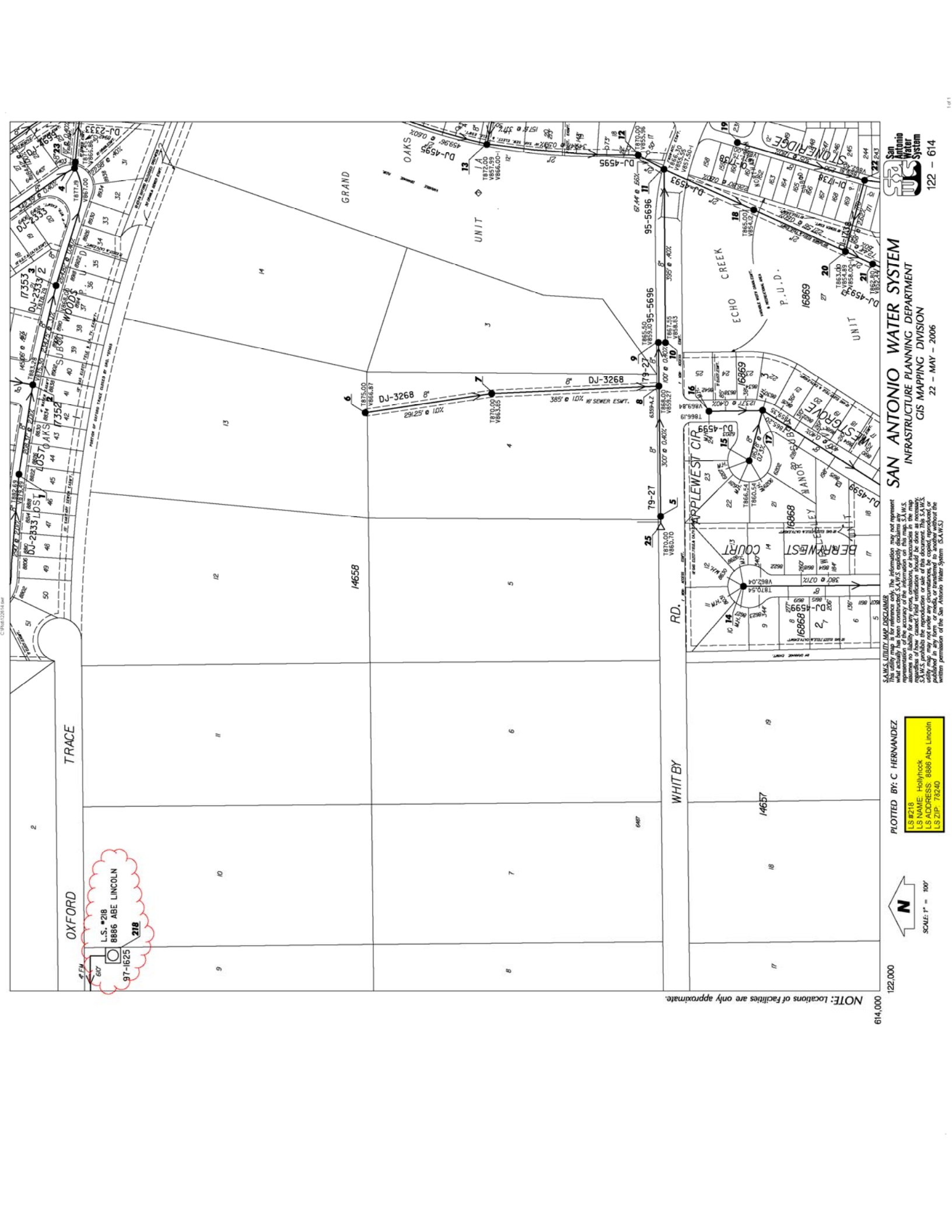
SAN ANTONIO MAP DISCLAIMER
This utility map is for reference only. The information may not represent actual conditions and does not constitute a contract. The S.A.W.S. assumes no liability for any errors, omissions, or inaccuracies in the map information. The S.A.W.S. reserves the right to modify the map information without notice. This S.A.W.S. utility map may not under any circumstances be copied, reproduced, or distributed in any form without the written permission of the San Antonio Water System. (S.A.W.S.)

PLOTTED BY: C. HERNANDEZ
LS #239
LS NAME: Vineyard
LS ADDRESS: 2303 N. Loop 1604 W.
LS ZIP: 78248

SCALE: 1" = 100'
N

644,000
148,000

NOTE: Locations of facilities are only approximate.

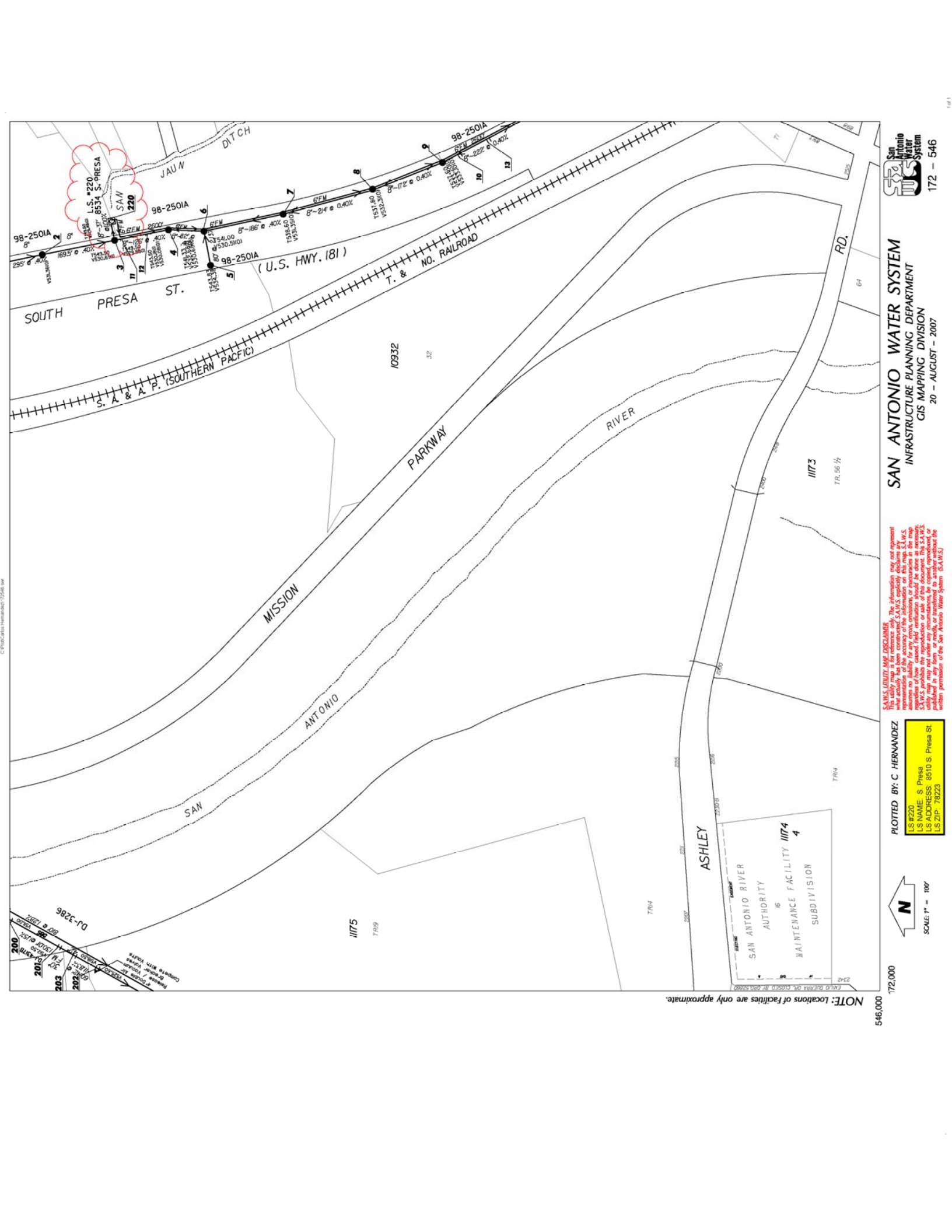


SANMUTILITY MAP DISCLAIMER
 This utility map is for reference only. The information may not represent what actually has been constructed. SAWS expressly disclaims any liability for any errors, omissions, or inaccuracies in this map. SAWS provides the information as a service to the public. SAWS utility may not under any circumstances, be copied, reproduced, or used in any way without the written permission of the San Antonio Water System (SAWS).

PLOTTED BY: C. HERNANDEZ
 LS #218
 LS NAME: Hollyhook
 LS ADDRESS: 8886 Abe Lincoln
 LS ZIP: 78240

N
 SCALE: 1" = 100'

614,000
 122,000
 NOTE: Locations of facilities are only approximate.



SANM.LINZL MAP DISCLAIMER
 This utility map is for reference only. The information may not represent what actually has been constructed. S.A.W.S. disclaims all liability for any errors, omissions, or inaccuracies in the map. S.A.W.S. reserves the right to make changes to the map at any time without notice. S.A.W.S. disclaims any liability for any damages, including consequential damages, arising from the use of this map. The information is provided as a service to the public and is not intended to constitute an offer of insurance or any other financial product. © 2007 San Antonio Water System (S.A.W.S.)

PLOTTED BY: C. HERNANDEZ
 LS #220
 LS NAME: S. Presa
 LS ADDRESS: 8510 S. Presa St.
 LS ZIP: 78223

SCALE: 1" = 100'

NOTE: Locations of facilities are only approximate.

546,000

172,000

000,000

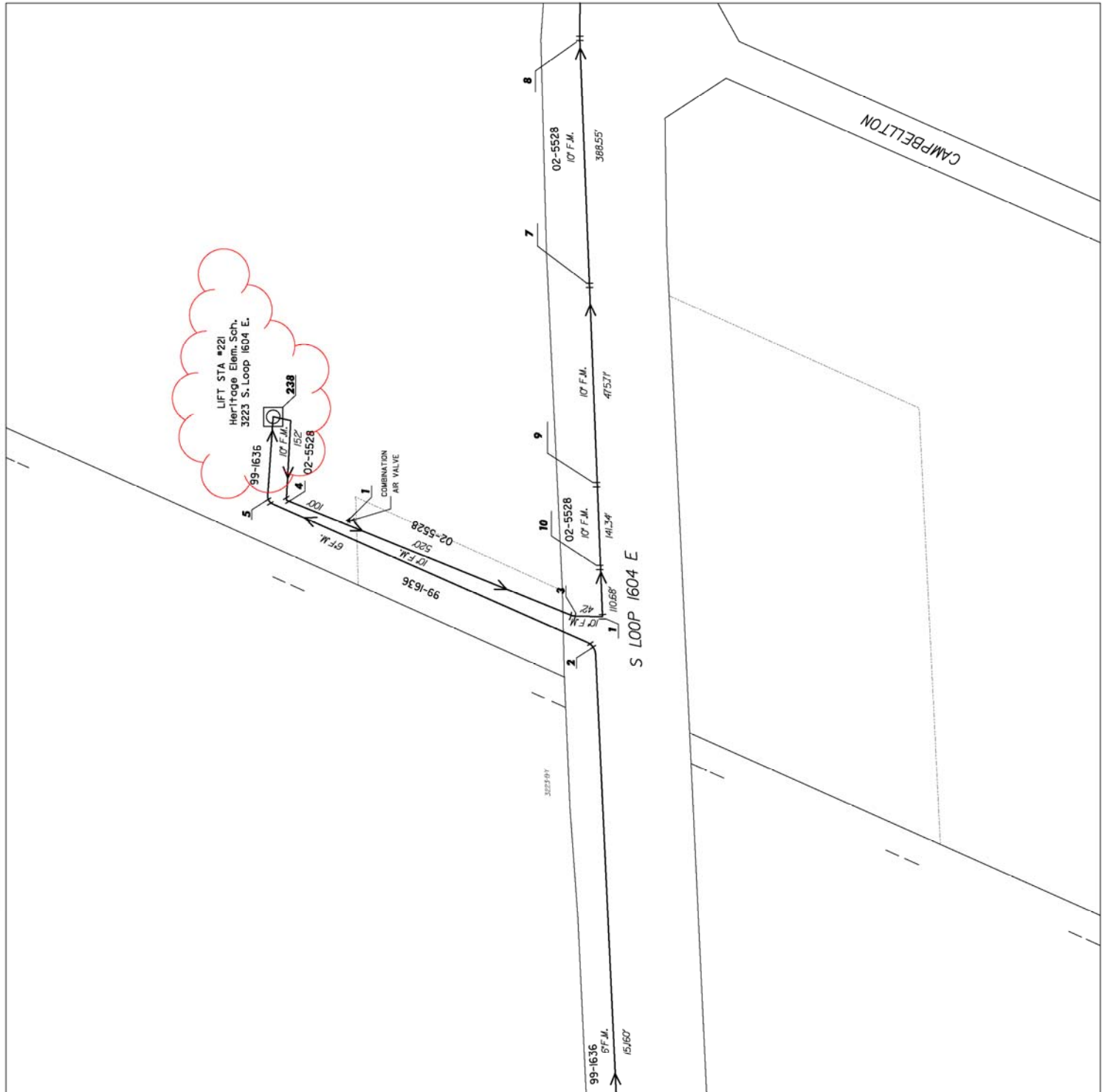
S.A.W.S. UTILITY MAP DISCLAIMER
The utility map is for reference only. The information may not represent the actual conditions of the utility system. The information on this map is the representation of the information as shown on the map. S.A.W.S. assumes no liability for any errors, omissions, or inaccuracies in the map. S.A.W.S. prohibits the reproduction or sale of this document. The S.A.W.S. utility map may not under any circumstances be copied, reproduced, or distributed without the written permission of the San Antonio Water System (S.A.W.S.)

Plotted By: Ernest J. Zavala
LS #221 - Heritage Elementary School
US NAD83 - 3223 S. Loop 1604 E.
US ZIP - 78112

 N
SCALE: 1" = 100'

166.000
646.000

NOTE: Locations of facilities are only approximate.



LIFT STA #221
Heritage Elem. Sch.
3223 S. Loop 1604 E.

CAMPBELLTON

S LOOP 1604 E

COMBINATION
AIR VALVE

99-1636
6" F.M.
15,160'

02-5528
10" F.M.
141,34'

02-5528
10" F.M.
41,517'

02-5528
10" F.M.
388,55'

8

7

9

10

1

2

3

4

5

6

7

8

9

10

11

12

13

14

15

16

17

18

19

20

21

22

23

24

25

26

27

28

29

30

31

32

33

34

35

36

37

38

39

40

41

42

43

44

45

46

47

48

49

50

51

52

53

54

55

56

57

58

59

60

61

62

63

64

65

66

67

68

69

70

71

72

73

74

75

76

77

78

79

80

81

82

83

84

85

86

87

88

89

90

91

92

93

94

95

96

97

98

99

100

101

102

103

104

105

106

107

108

109

110

111

112

113

114

115

116

117

118

119

120

121

122

123

124

125

126

127

128

129

130

131

132

133

134

135

136

137

138

139

140

141

142

143

144

145

146

147

148

149

150

151

152

153

154

155

156

157

158

159

160

161

162

163

164

165

166

167

168

169

170

171

172

173

174

175

176

177

178

179

180

181

182

183

184

185

186

187

188

189

190

191

192

193

194

195

196

197

198

199

200

201

202

203

204

205

206

207

208

209

210

211

212

213

214

215

216

217

218

219

220

221

222

223

224

225

226

227

228

229

230

231

232

233

234

235

236

237

238

239

240

241

242

243

244

245

246

247

248

249

250

251

252

253

254

255

256

257

258

259

260

261

262

263

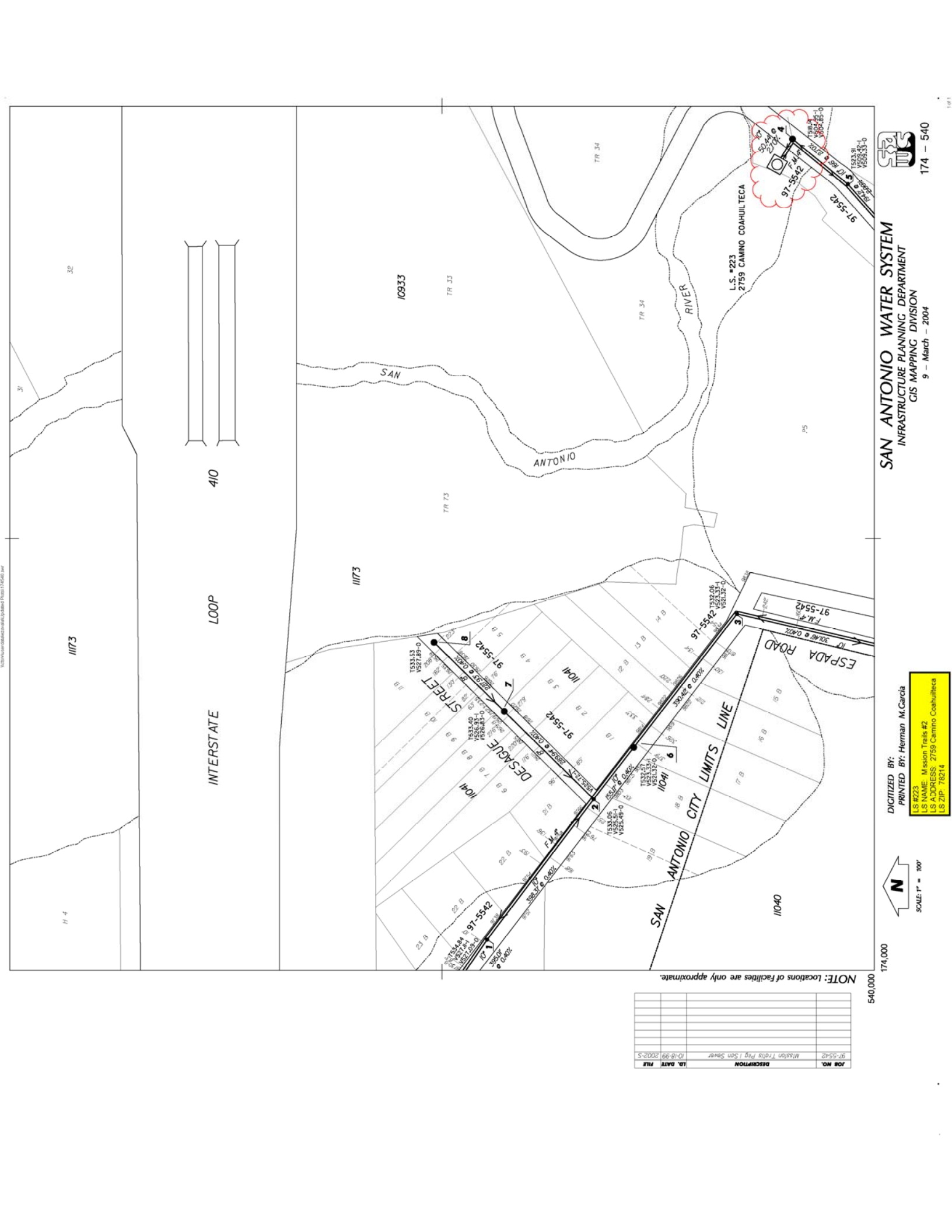
264

265

266

267

268



JOB NO.	DESCRIPTION	LD.	DATE	FILE
97-5542	Mission Trails #2 San Sewer	10-18-99	2002.5	

NOTE: Locations of facilities are only approximate.

174,000
540,000



SCALE: 1" = 100'

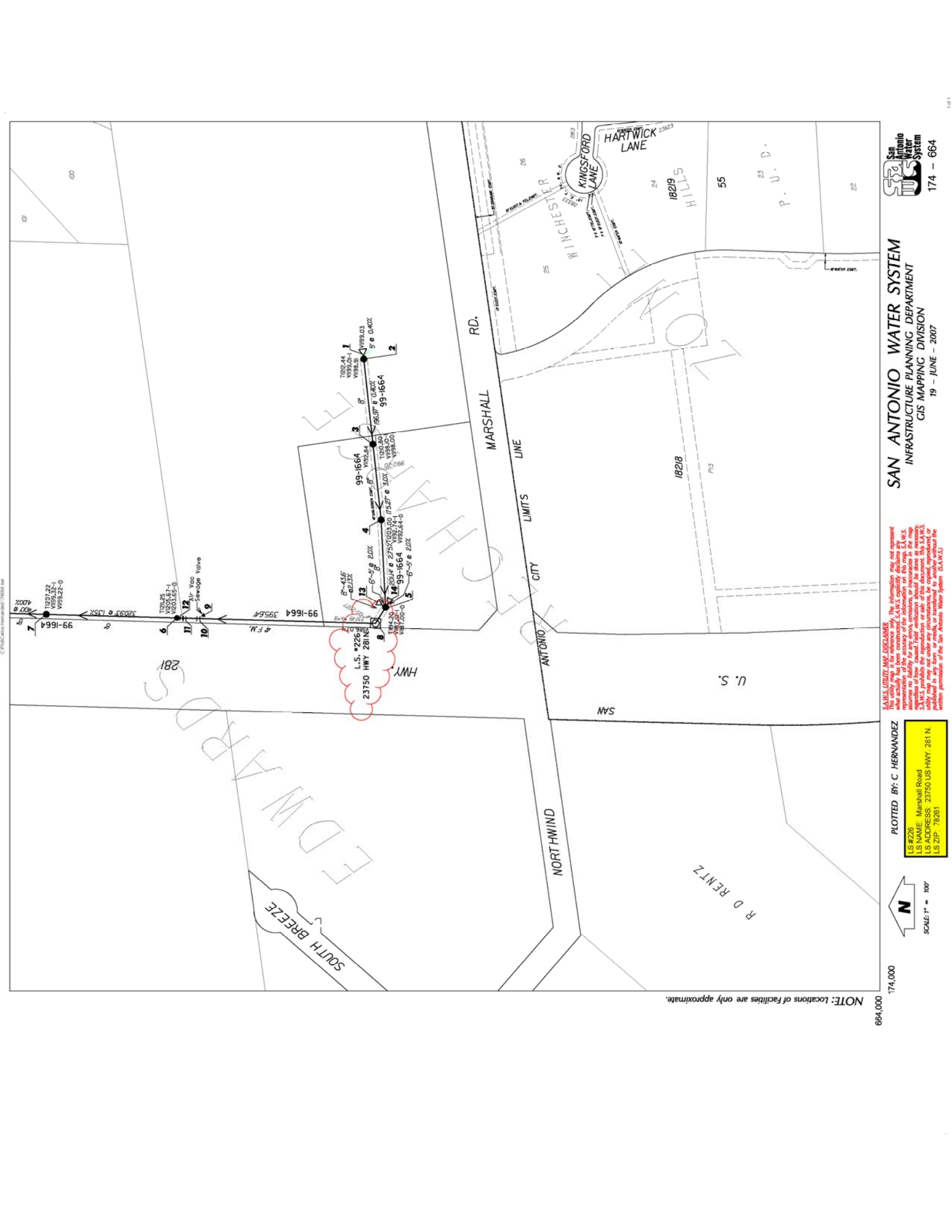
DIGITIZED BY: Herman M. Garcia
PRINTED BY: Herman M. Garcia

LS #223: Mission Trails #2
LS ADDRESS: 2759 Camino Coahuilteca
LS ZIP: 78214

SAN ANTONIO WATER SYSTEM
INFRASTRUCTURE PLANNING DEPARTMENT
GIS MAPPING DIVISION



174 - 540
9 - March - 2004



SAN ANTONIO WATER SYSTEM
This utility map is for reference only. The information may not represent actual conditions and has been compiled from various sources. S.A.W.S. assumes no liability for any errors, omissions, or inaccuracies in the map. S.A.W.S. prohibits the reproduction or sale of this document. This S.A.W.S. utility map may not under any circumstances be copied, reproduced, or otherwise used for any purpose without the written permission of the San Antonio Water System (S.A.W.S.)

PLOTTED BY: C. HERNANDEZ
LS #226
LS NAME: Marshall Road
LS ADDRESS: 23750 US HWY. 281 N.
LS ZIP: 78281

SCALE: 1" = 100'

NOTE: Locations of facilities are only approximate.

664,000 174,000

STATE UTILITY MAP DISCLAIMER
This utility map is for reference only. The information may not represent what actually has been constructed. S.A.W.S. expressly disclaims any liability for any errors, omissions, or inaccuracies in the map. Customers who have planned field verifications should be done as necessary. Utility map may not under any circumstances be copied, reproduced, or published in any form or media, or transmitted to another without the written permission of the San Antonio Water System. (S.A.W.S.)

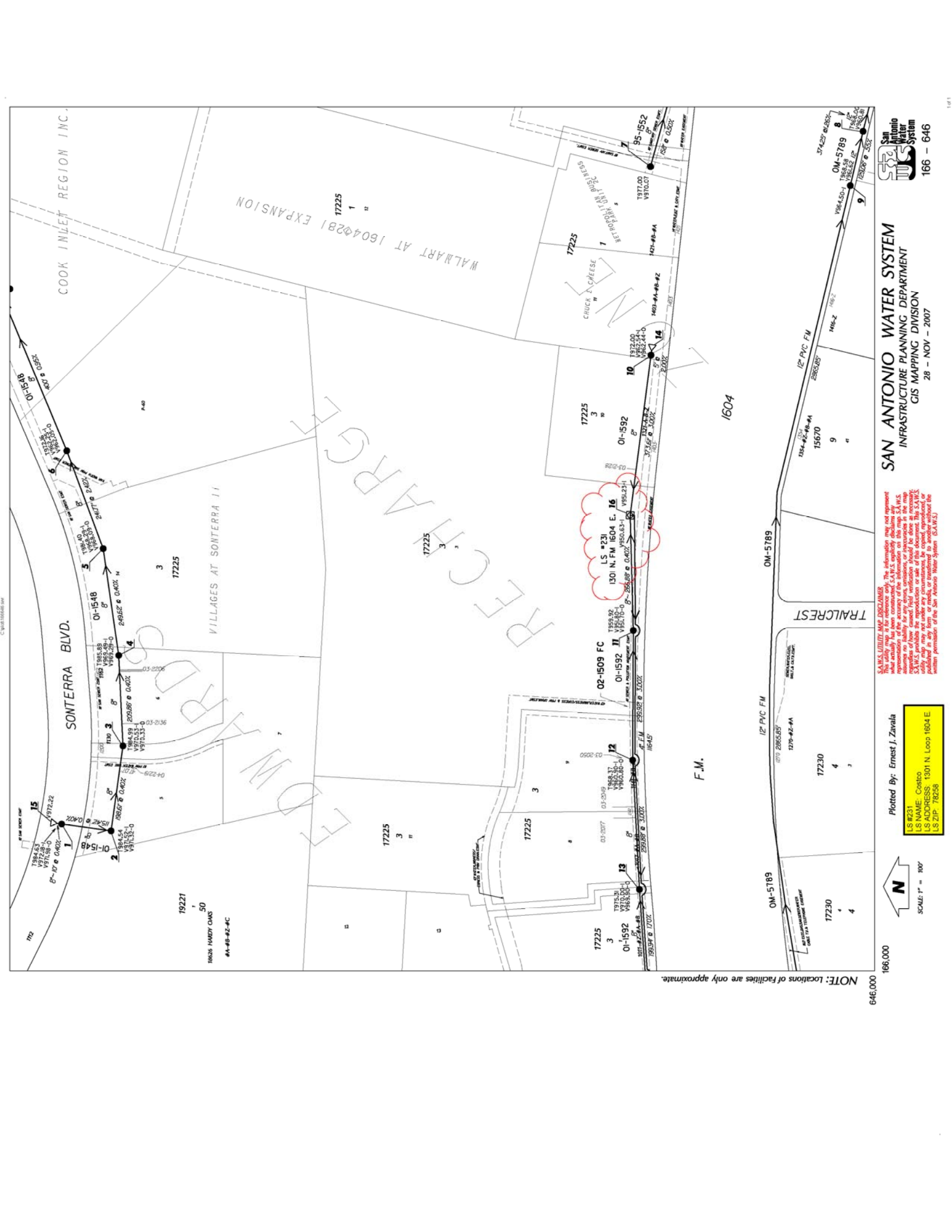
PLOTTED BY: Herman M. Garcia
L.S.#230
L.S. NAME: Nickel and Dime
L.S. ADDRESS: 13311 Babcock Road
L.S. ZIP: 78249

SCALE: 1" = 100'

116,000
630,000



NOTE: Locations of facilities are only approximate.



SAWS UTILITY MAP DISCLAIMER: The information may not represent what actually has been constructed. SAWS explicitly disclaims any representation of the accuracy of the information on this map. SAWS, regardless of how, cannot, hold verification should be done in accordance with SAWS standards. SAWS provides the reproduction or use of the document. The SAWS disclaims any liability for any errors, omissions, or inaccuracies. No written permission of the San Antonio Water System (SAWS).

Plotted By: Ernest J. Zavala
 LS #231
 LS NAME: Corbco
 LS ADDRESS: 1301 N. Loop 1604 E.
 LS ZIP: 78258

SCALE: 1" = 100'

166,000
 646,000

SAN ANTONIO WATER SYSTEM
 INFRASTRUCTURE PLANNING DEPARTMENT
 GIS MAPPING DIVISION
 28 - NOV - 2007
 166 - 646

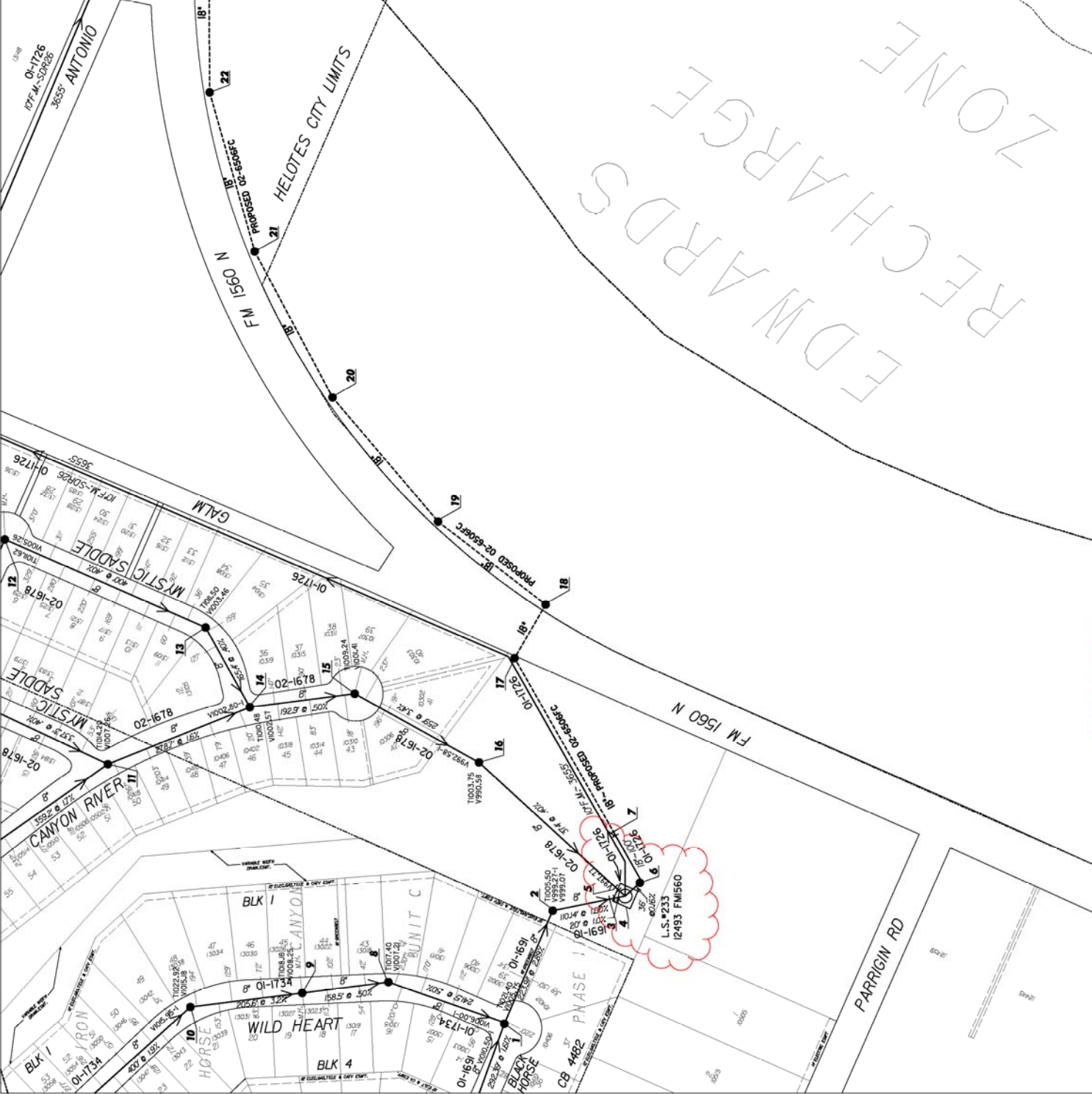
NOTE: Locations of Facilities are only approximate.

SAN ANTONIO MAP DISCLAIMER
This utility map is for reference only. The information may not represent what actually has been constructed. The City of San Antonio and the San Antonio Water System disclaims any liability for any errors, omissions, or inaccuracies in the map. The City of San Antonio and the San Antonio Water System do not warrant the accuracy, completeness, or reliability of the information shown on this map. This S.A.W.S. utility map may not under any circumstances be copied, reproduced, or otherwise used without the written permission of the San Antonio Water System. (S.A.W.S.)

PLOTTED BY: C. HERNANDEZ
LS #233
LS NAME: Iron Horse
LS ADDRESS: 12493 FM 1560
LS ZIP: 78023

096.000
SCALE: 1" = 100'

096.000
NOTE: Locations of facilities are only approximate.



REC'D CHARGES
EDWARDS
LONE

SANMUTILITY MAP DISCLAIMER
This utility map is for reference only. The information may not represent actual conditions. The user assumes all responsibility for the accuracy of this map. S.A.W.S. assumes no liability for any errors, omissions, or inaccuracies in the map information. S.A.W.S. prohibits the reproduction or sale of this document. This S.A.W.S. utility map may not under any circumstances be copied, reproduced, or transmitted in any form or by any means without the written permission of the San Antonio Water System (S.A.W.S.U).

PLOTTED BY: P.D. VASQUEZ
LS #238
LS NAME: Fox Grove
LS ADDRESS: 21355 Branding Bay
LS ZIP: 78259

190,000
SCALE: 1" = 100'



NOTE: Locations of facilities are only approximate.



SHEETS

FOX GROVE

S

S.A.W.S. UTILITY MAP DISCLAIMER
This utility map is for reference only. The information may not represent the actual conditions of the system. The information on this map is the best representation of the information available to the S.A.W.S. at the time of the map. S.A.W.S. assumes no liability for any errors, omissions, or inaccuracies in the map. S.A.W.S. prohibits the reproduction or sale of this document. The S.A.W.S. utility map may not be used under any circumstances, be copied, reproduced, or distributed without the written permission of the San Antonio Water System (S.A.W.S.).

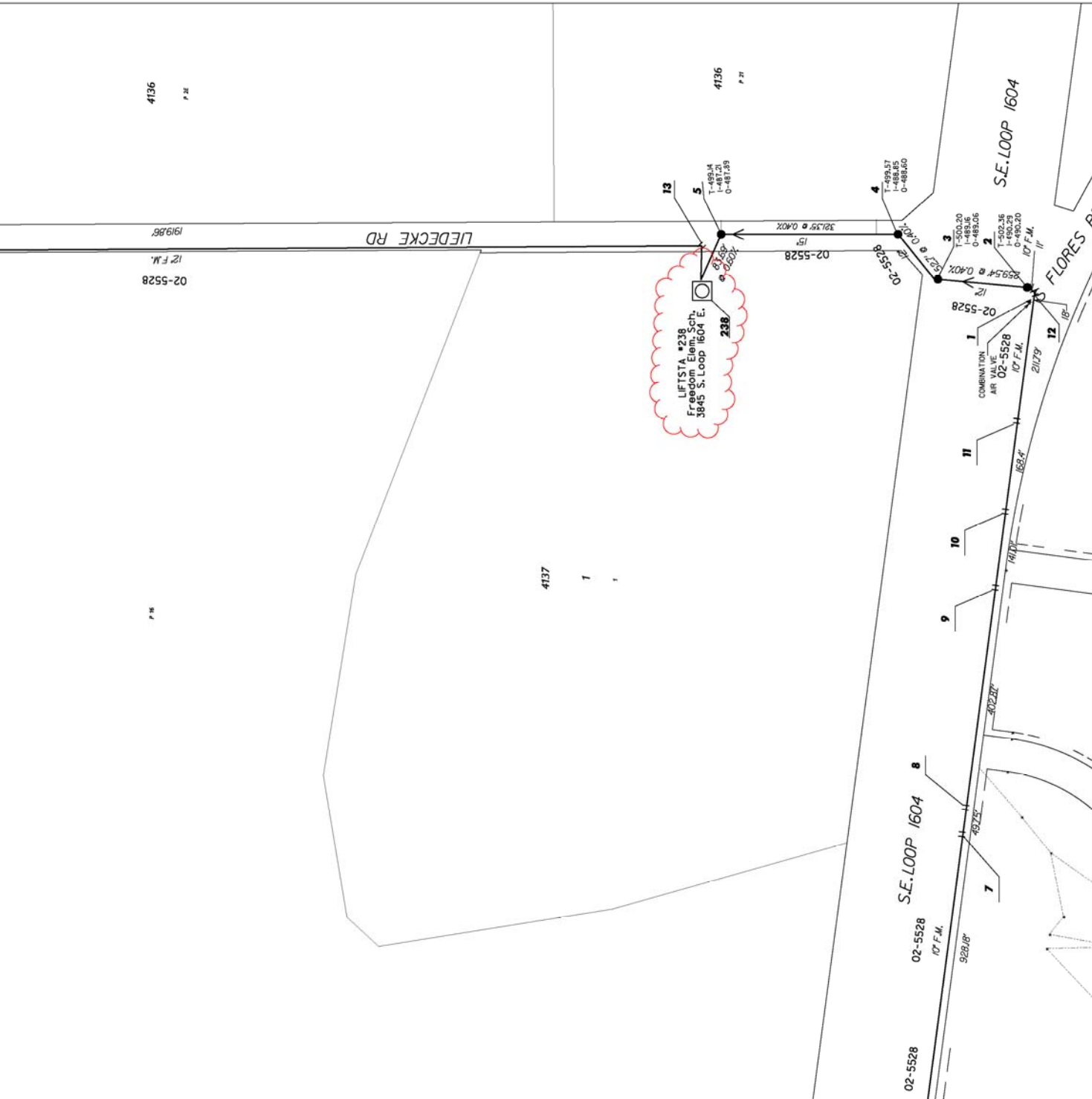
Plotted By: Ernest J. Zavala
LS #238
LS #101616
LS #101617
LS #101618
LS #101619
LS #101620
LS #101621
LS #101622
LS #101623
LS #101624
LS #101625
LS #101626
LS #101627
LS #101628
LS #101629
LS #101630
LS #101631
LS #101632
LS #101633
LS #101634
LS #101635
LS #101636
LS #101637
LS #101638
LS #101639
LS #101640
LS #101641
LS #101642
LS #101643
LS #101644
LS #101645
LS #101646
LS #101647
LS #101648
LS #101649
LS #101650
LS #101651
LS #101652
LS #101653
LS #101654
LS #101655
LS #101656
LS #101657
LS #101658
LS #101659
LS #101660
LS #101661
LS #101662
LS #101663
LS #101664
LS #101665
LS #101666
LS #101667
LS #101668
LS #101669
LS #101670
LS #101671
LS #101672
LS #101673
LS #101674
LS #101675
LS #101676
LS #101677
LS #101678
LS #101679
LS #101680
LS #101681
LS #101682
LS #101683
LS #101684
LS #101685
LS #101686
LS #101687
LS #101688
LS #101689
LS #101690
LS #101691
LS #101692
LS #101693
LS #101694
LS #101695
LS #101696
LS #101697
LS #101698
LS #101699
LS #101700
LS #101701
LS #101702
LS #101703
LS #101704
LS #101705
LS #101706
LS #101707
LS #101708
LS #101709
LS #101710
LS #101711
LS #101712
LS #101713
LS #101714
LS #101715
LS #101716
LS #101717
LS #101718
LS #101719
LS #101720
LS #101721
LS #101722
LS #101723
LS #101724
LS #101725
LS #101726
LS #101727
LS #101728
LS #101729
LS #101730
LS #101731
LS #101732
LS #101733
LS #101734
LS #101735
LS #101736
LS #101737
LS #101738
LS #101739
LS #101740
LS #101741
LS #101742
LS #101743
LS #101744
LS #101745
LS #101746
LS #101747
LS #101748
LS #101749
LS #101750
LS #101751
LS #101752
LS #101753
LS #101754
LS #101755
LS #101756
LS #101757
LS #101758
LS #101759
LS #101760
LS #101761
LS #101762
LS #101763
LS #101764
LS #101765
LS #101766
LS #101767
LS #101768
LS #101769
LS #101770
LS #101771
LS #101772
LS #101773
LS #101774
LS #101775
LS #101776
LS #101777
LS #101778
LS #101779
LS #101780
LS #101781
LS #101782
LS #101783
LS #101784
LS #101785
LS #101786
LS #101787
LS #101788
LS #101789
LS #101790
LS #101791
LS #101792
LS #101793
LS #101794
LS #101795
LS #101796
LS #101797
LS #101798
LS #101799
LS #101800
LS #101801
LS #101802
LS #101803
LS #101804
LS #101805
LS #101806
LS #101807
LS #101808
LS #101809
LS #101810
LS #101811
LS #101812
LS #101813
LS #101814
LS #101815
LS #101816
LS #101817
LS #101818
LS #101819
LS #101820
LS #101821
LS #101822
LS #101823
LS #101824
LS #101825
LS #101826
LS #101827
LS #101828
LS #101829
LS #101830
LS #101831
LS #101832
LS #101833
LS #101834
LS #101835
LS #101836
LS #101837
LS #101838
LS #101839
LS #101840
LS #101841
LS #101842
LS #101843
LS #101844
LS #101845
LS #101846
LS #101847
LS #101848
LS #101849
LS #101850
LS #101851
LS #101852
LS #101853
LS #101854
LS #101855
LS #101856
LS #101857
LS #101858
LS #101859
LS #101860
LS #101861
LS #101862
LS #101863
LS #101864
LS #101865
LS #101866
LS #101867
LS #101868
LS #101869
LS #101870
LS #101871
LS #101872
LS #101873
LS #101874
LS #101875
LS #101876
LS #101877
LS #101878
LS #101879
LS #101880
LS #101881
LS #101882
LS #101883
LS #101884
LS #101885
LS #101886
LS #101887
LS #101888
LS #101889
LS #101890
LS #101891
LS #101892
LS #101893
LS #101894
LS #101895
LS #101896
LS #101897
LS #101898
LS #101899
LS #101900
LS #101901
LS #101902
LS #101903
LS #101904
LS #101905
LS #101906
LS #101907
LS #101908
LS #101909
LS #101910
LS #101911
LS #101912
LS #101913
LS #101914
LS #101915
LS #101916
LS #101917
LS #101918
LS #101919
LS #101920
LS #101921
LS #101922
LS #101923
LS #101924
LS #101925
LS #101926
LS #101927
LS #101928
LS #101929
LS #101930
LS #101931
LS #101932
LS #101933
LS #101934
LS #101935
LS #101936
LS #101937
LS #101938
LS #101939
LS #101940
LS #101941
LS #101942
LS #101943
LS #101944
LS #101945
LS #101946
LS #101947
LS #101948
LS #101949
LS #101950
LS #101951
LS #101952
LS #101953
LS #101954
LS #101955
LS #101956
LS #101957
LS #101958
LS #101959
LS #101960
LS #101961
LS #101962
LS #101963
LS #101964
LS #101965
LS #101966
LS #101967
LS #101968
LS #101969
LS #101970
LS #101971
LS #101972
LS #101973
LS #101974
LS #101975
LS #101976
LS #101977
LS #101978
LS #101979
LS #101980
LS #101981
LS #101982
LS #101983
LS #101984
LS #101985
LS #101986
LS #101987
LS #101988
LS #101989
LS #101990
LS #101991
LS #101992
LS #101993
LS #101994
LS #101995
LS #101996
LS #101997
LS #101998
LS #101999
LS #102000

SCALE: 1" = 100'
N

184,000

504,000

NOTE: Locations of facilities are only approximate.



4136
P. 21

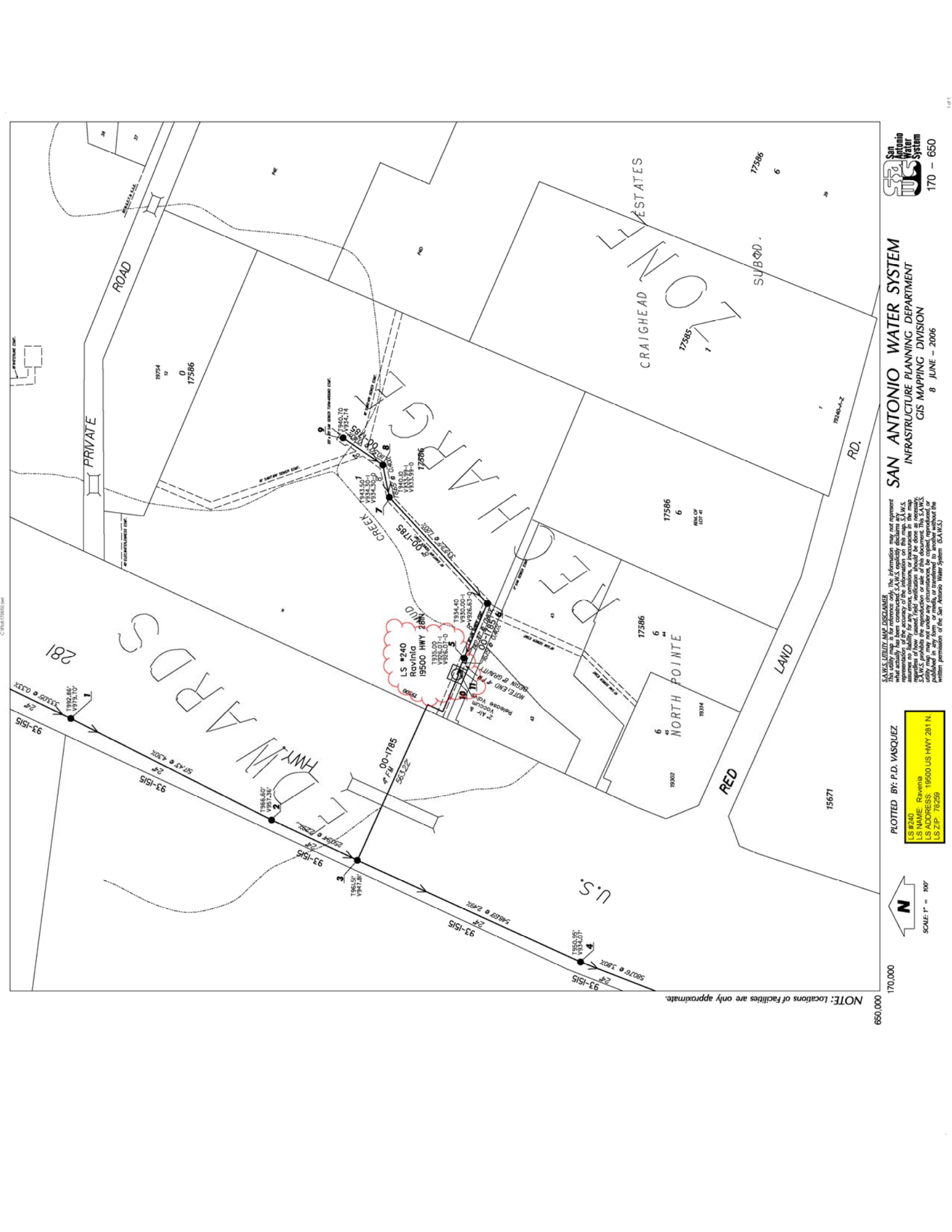
1919.86'
12" F.M.
02-5528

4137
P. 18

4136
P. 21

LIFT STA #238
Freedom Elem. Sch.
3645 S. Loop 1604 E.

SE. LOOP 1604
FLORES RD



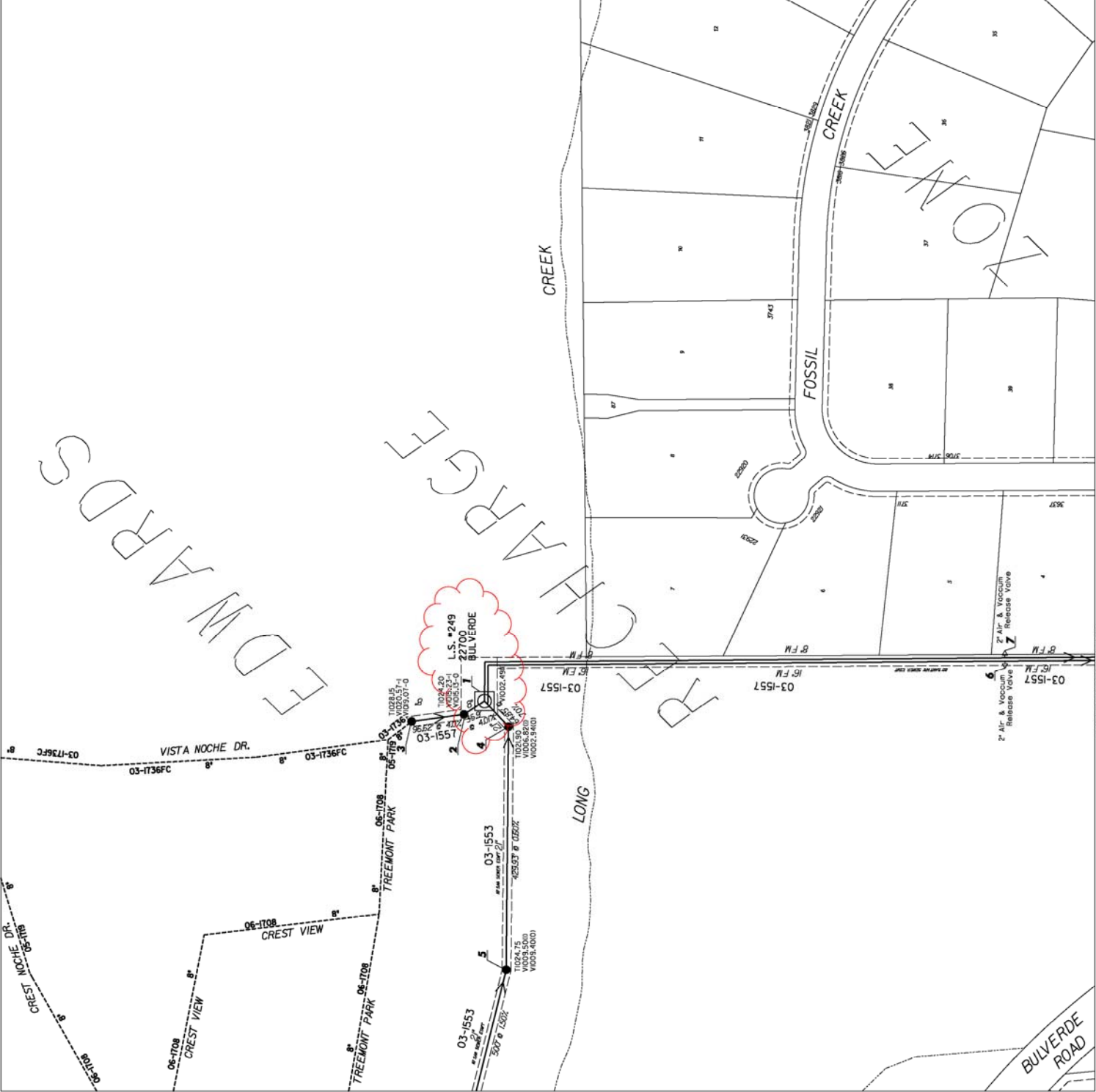
SAN ANTONIO WATER SYSTEM
 INFRASTRUCTURE PLANNING DEPARTMENT
 GIS MAPPING DIVISION
 8 JUNE - 2006

S.A.W.S. UTILITY MAP DISCLAIMER
 This utility map is for reference only. The information may not represent the actual location of the utility facilities. The utility department assumes no liability for any errors, omissions, or inaccuracies in the map information. This S.A.W.S. Utility Map is provided as a public service. S.A.W.S. prohibits the reproduction or sale of this document. This S.A.W.S. Utility Map may not be used for any commercial purposes without the written permission of the San Antonio Water System (S.A.W.S.).

PLOTTED BY: P.D. VASQUEZ
 LS #240
 LS NAME: Ravelin
 LS ADDRESS: 19500 US HWY 281 N
 LS ZIP: 78259

SCALE: 1" = 100'

NOTE: Locations of Facilities are only approximate.



NOTE: Locations of facilities are only approximate.

682.000
182.000

N
 SCALE: 1" = 100'

PLOTTED BY: P.D. VASQUEZ
 LS #249
 LS NAME: Cibola Canyon
 LS ADDRESS: 22700 Bulverde Road
 LS ZIP: 78261

SAN ANTONIO WATER SYSTEM
 INFRASTRUCTURE PLANNING DEPARTMENT
 GIS MAPPING DIVISION
 3 MAY - 2007
 182 - 662

SAN ANTONIO WATER SYSTEM
 182 - 662